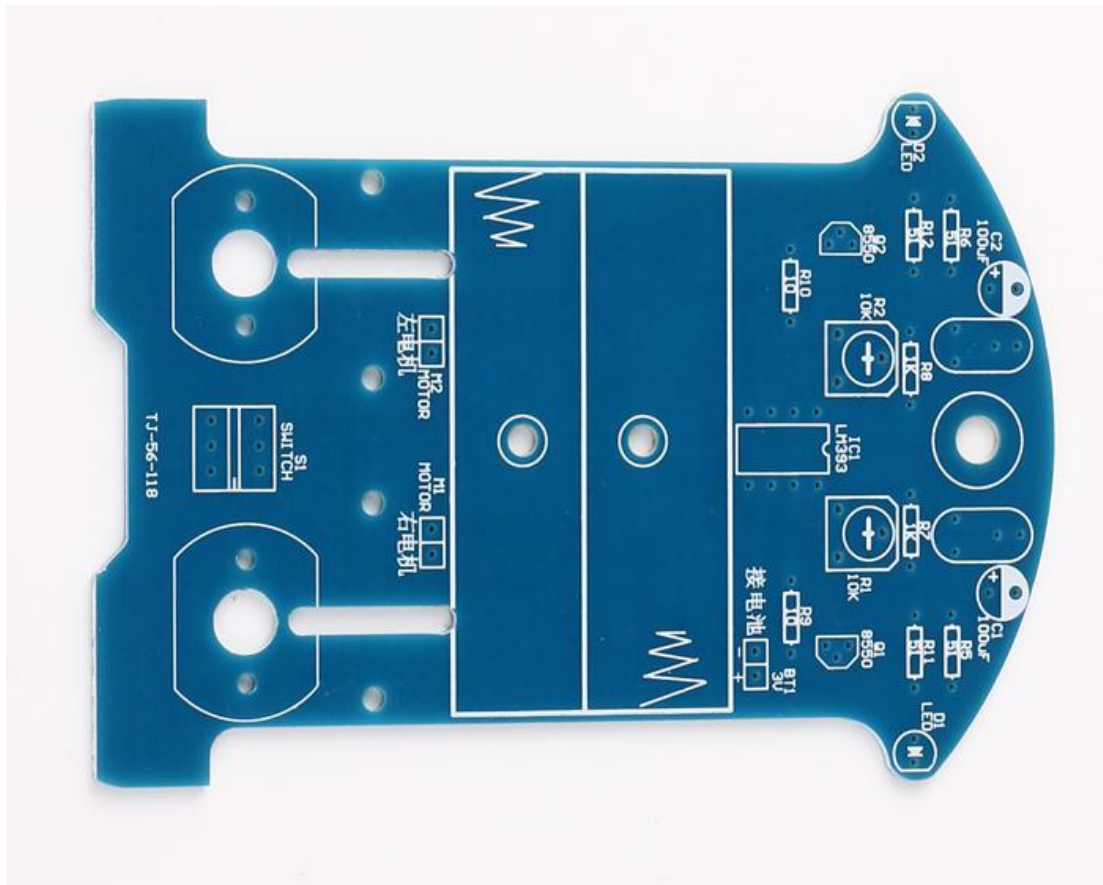
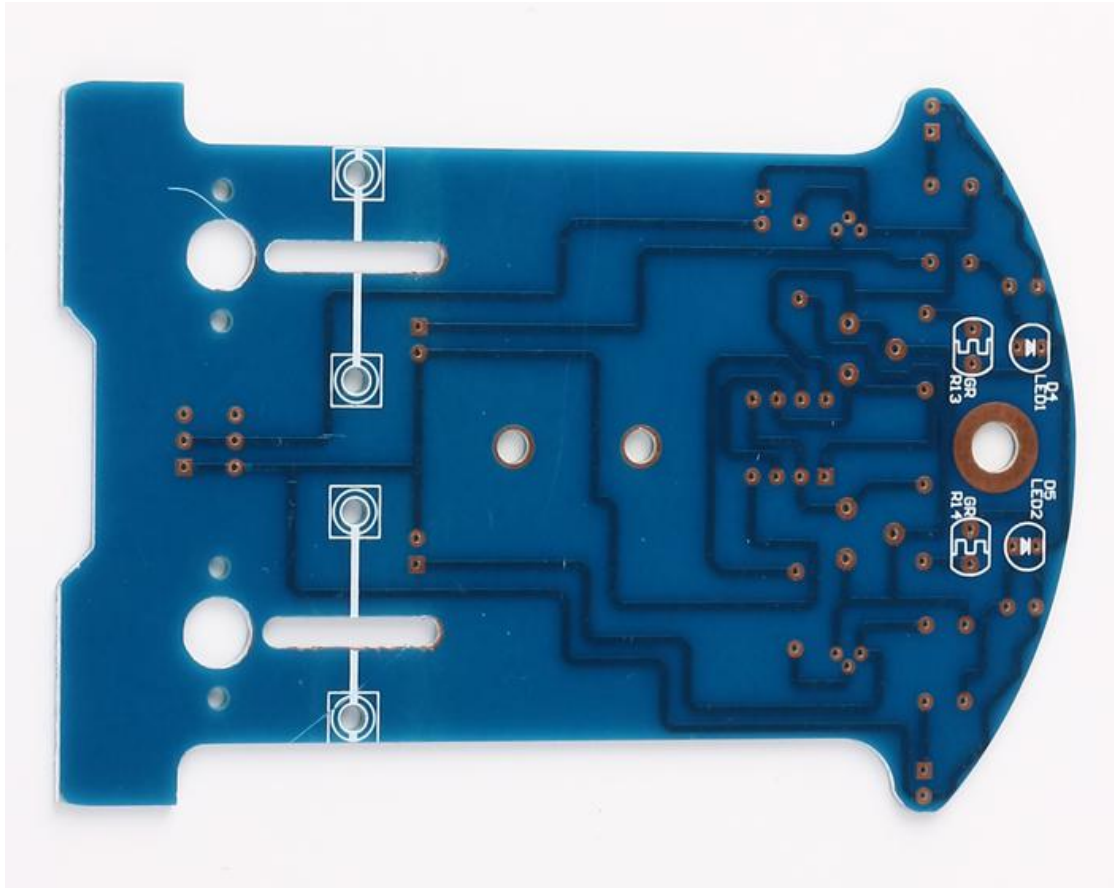


Installation Steps



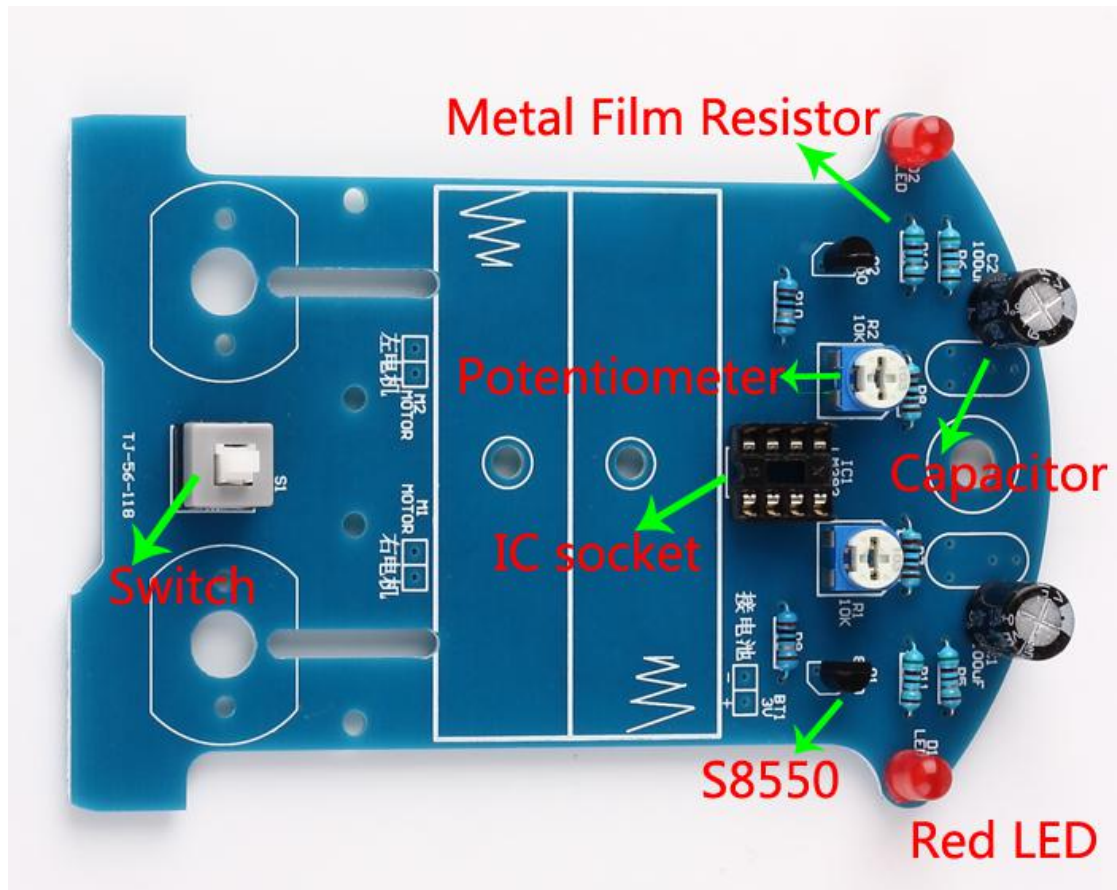


1>.Install circuit.

1.1 Install metal film resistor,DIP-8P IC socket,Self-Locking switch,Potentiometer,S8550,Electrolytic capacitor,5mm Red LED on PCB according to mark on PCB.

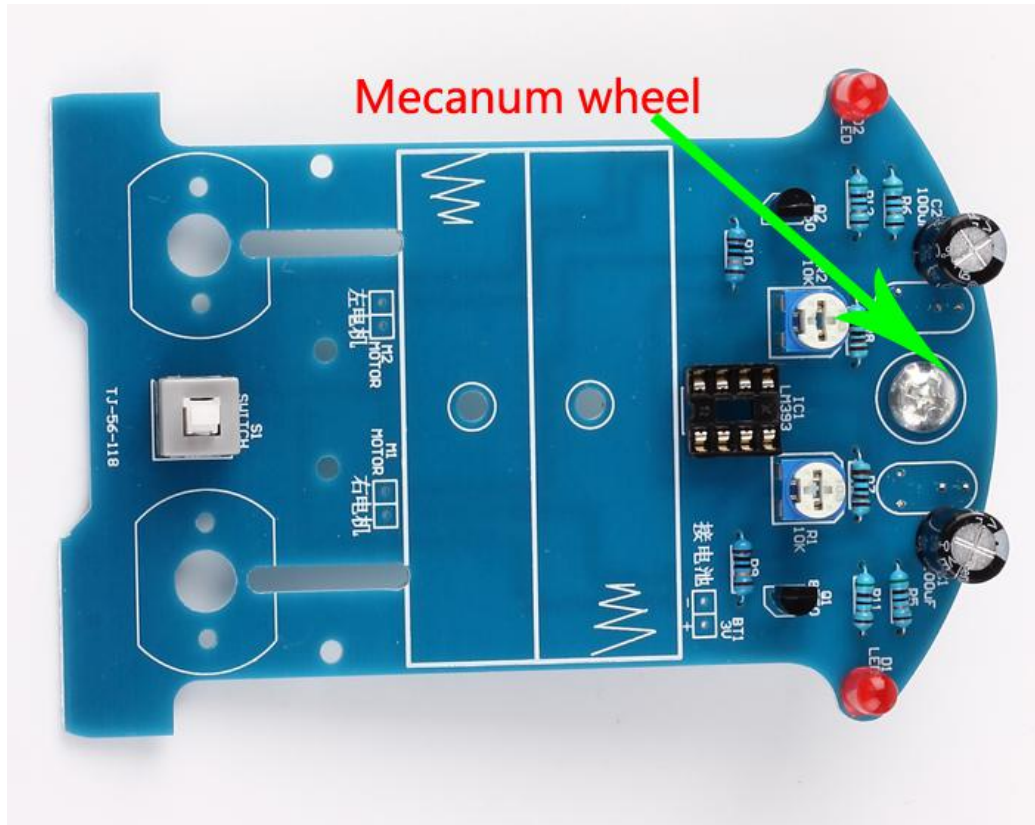
1.1.1 Pay attention to the direction of IC Socket.

1.1.2 In addition to facilitate debugging, don't install IC LM393 temporarily .

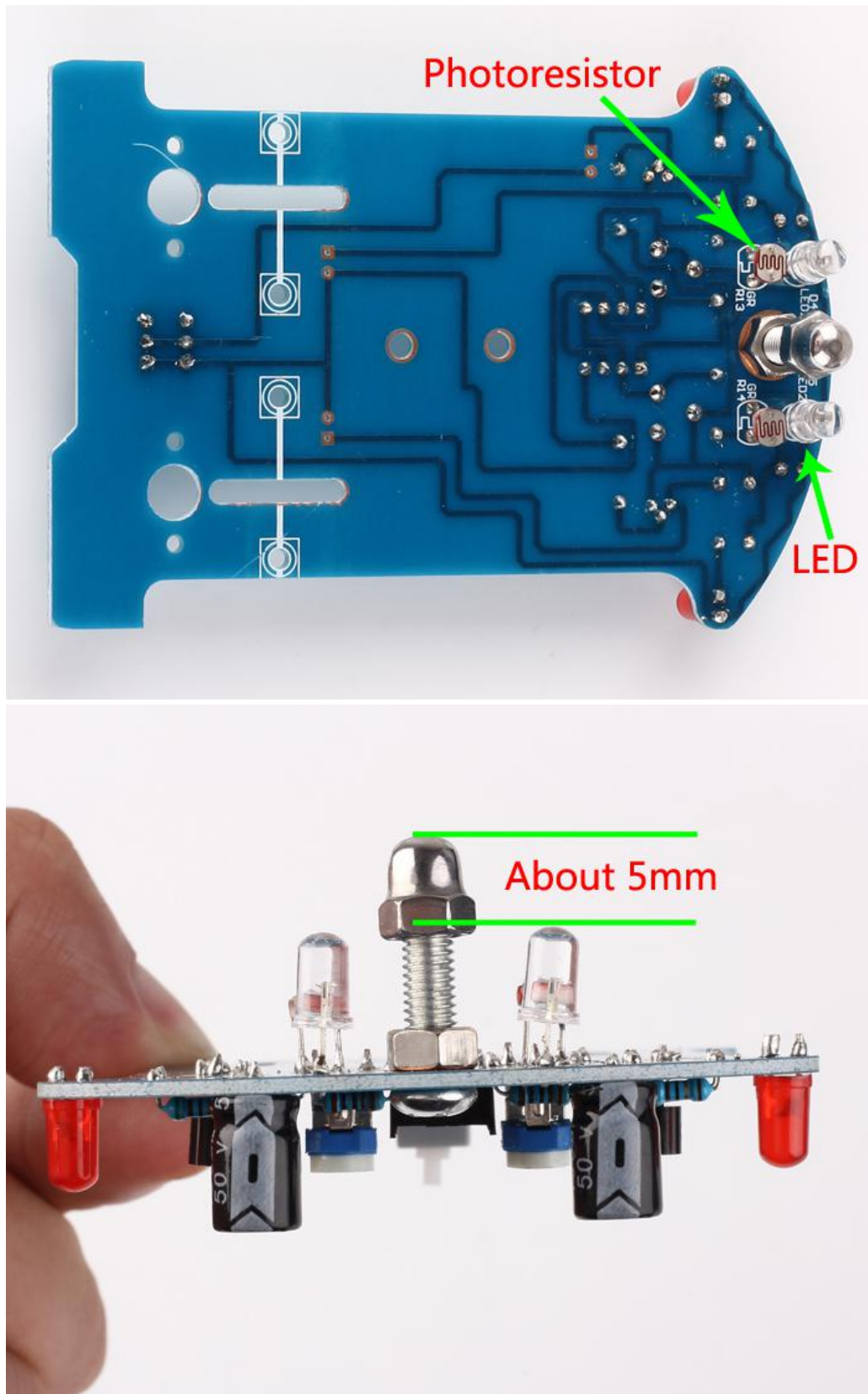


1.2 Install Mecanum wheel

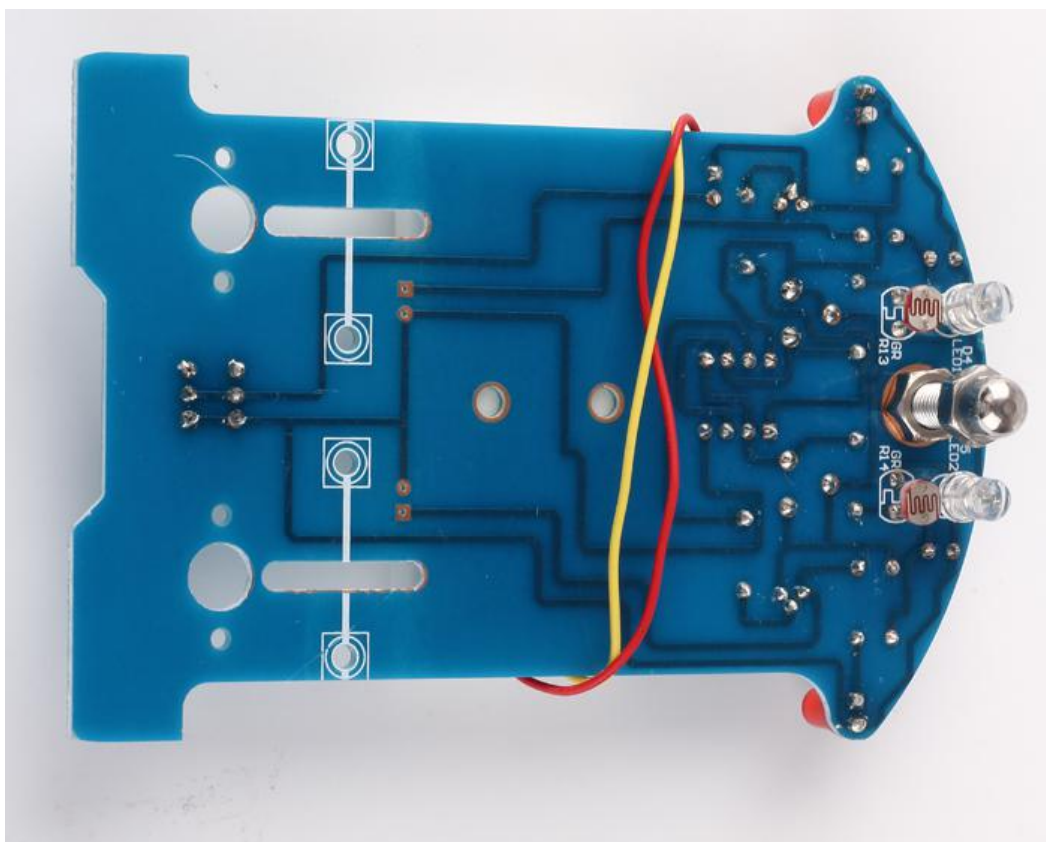
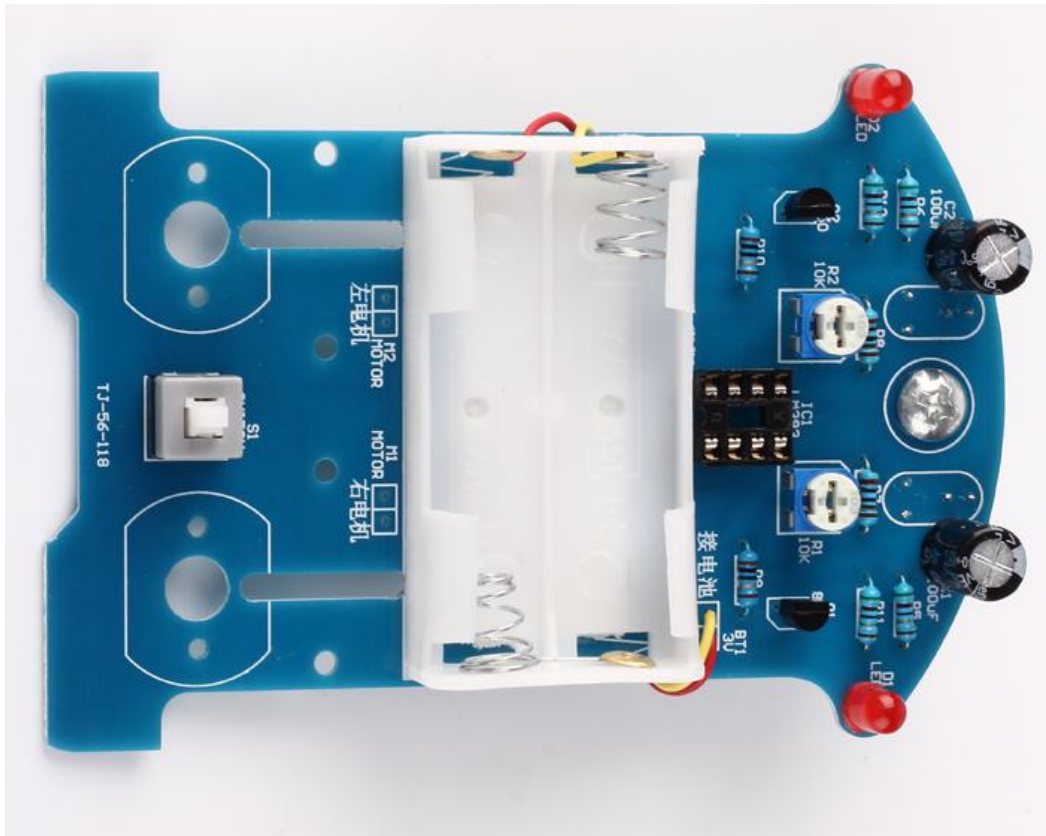
1.2.1 PCB placed in front. The support bolts of the caster are inserted into the hole, tighten the nuts screwed into the caster, and finally fit the caster and tighten.



1.3 Install photoresistor and white LED on PCB reverse. But please make sure the distance is about 5mm between top of mecanum wheel (top of screw cap top) and photoresistor/LED.



1.4 Install battery case.



1.5 Test.

1.5.1 Install 2pcs AA battery.

1.5.2 Press on switch.If 2pcs white LED ON,the installation is successful.If LED off,please check the welding.Pay attention to the direction of LED and other component and check pseudo Soldering.

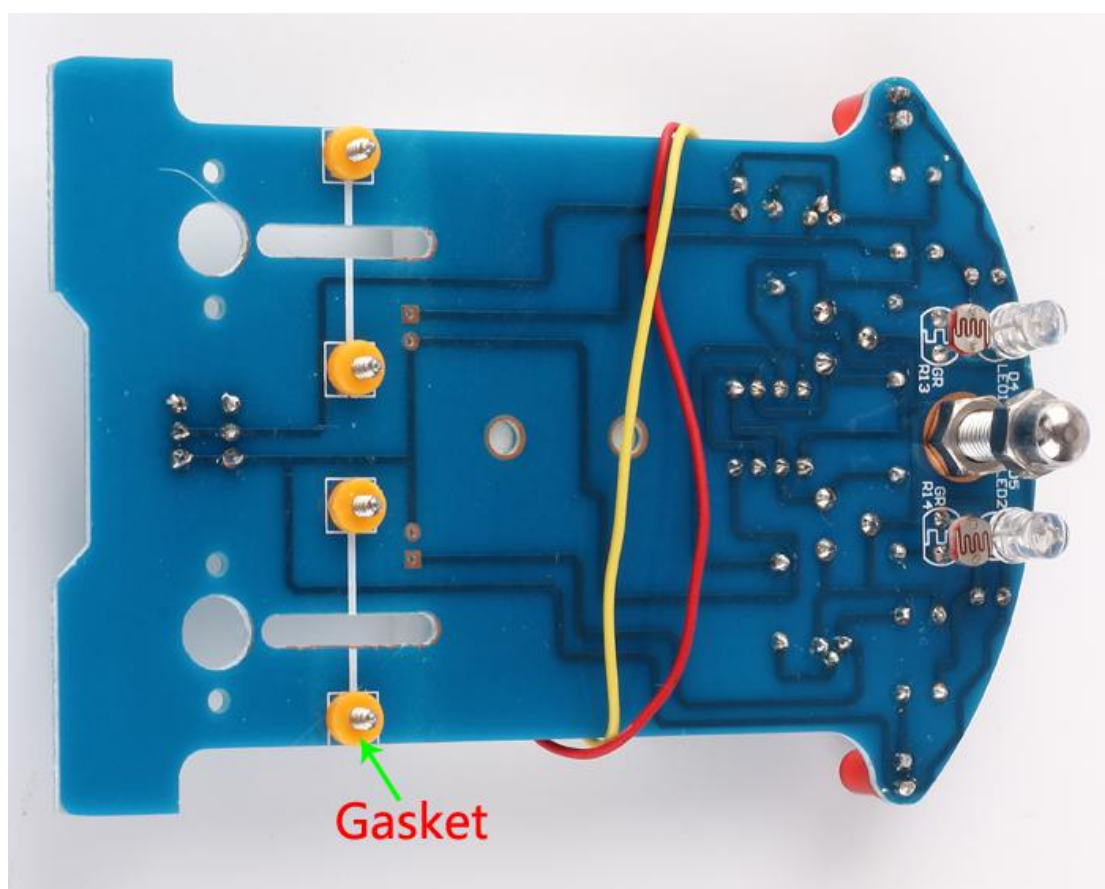
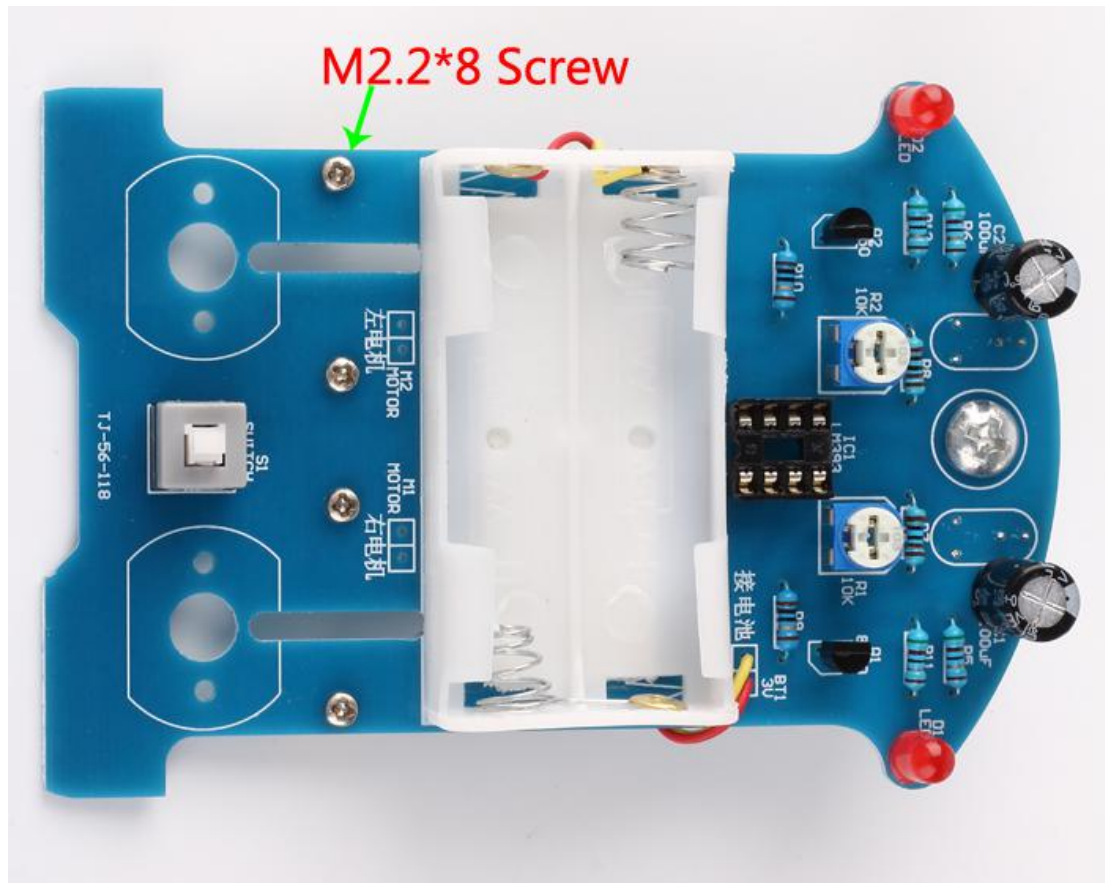
2>.Install mechanical parts

2.1 Install the four gaskets on the circuit board.

The role of the gasket is to increase the gap between the axle and the circuit board, so that the gear mounted on the shaft has enough rotation space.

First insert a M2.2 * 8 screw from the front of the board into the mounting hole, place a gasket from the back of the circuit board on the screw.

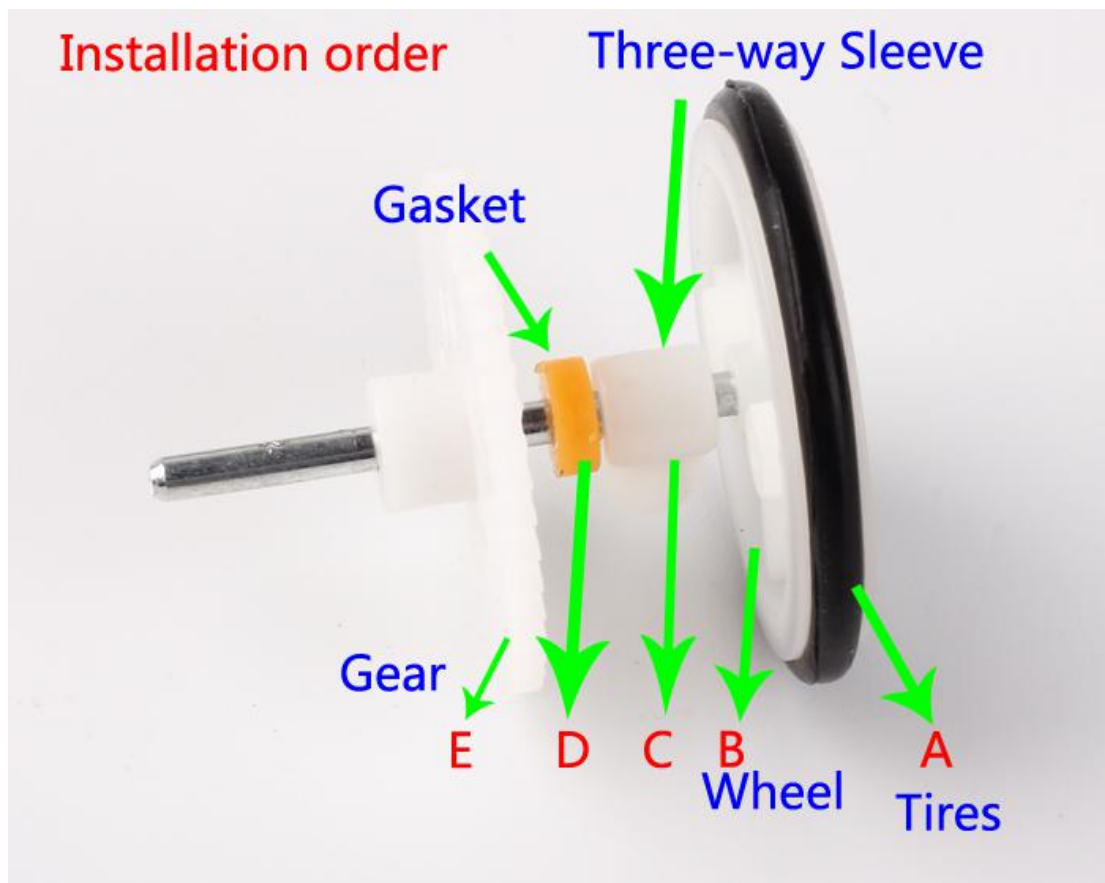
Clamp the gasket with a small pliers, turn the screw with a small screwdriver until the gasket is close to the circuit board at last.



2.2 Insert a steel shaft from the center hole of the wheel and note that the direction is inserted from one side of the raised sleeve of the wheel. It is better to insert the steel shaft parallel to the smooth side of the wheel.

2.3 Put a three-way sleeve into the steel shaft, close to the wheel, and then a gasket into the steel shaft, close to the three-way sleeve, installed in place, toggle three-way sleeve, should be flexible. Otherwise appropriate to increase the gap between them. Install tires.

2.4 Place a gear into the steel shaft in the center of the steel shaft.

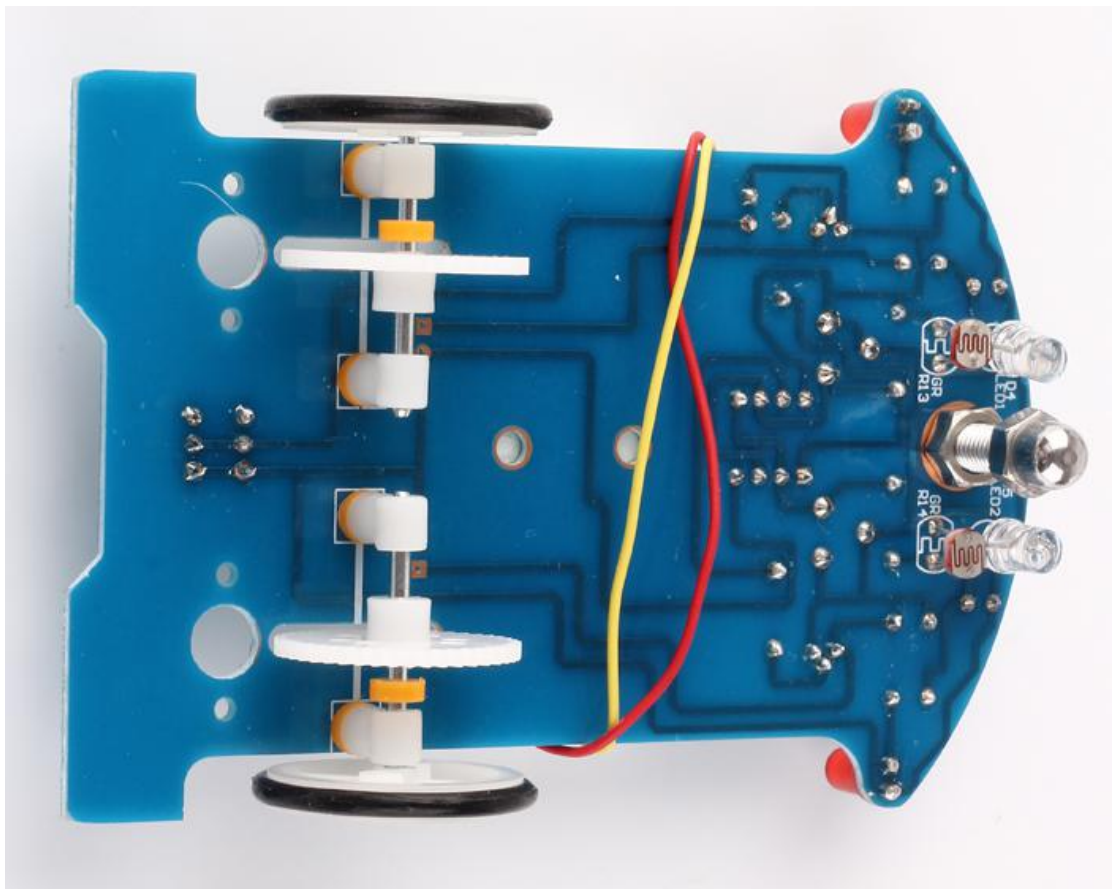
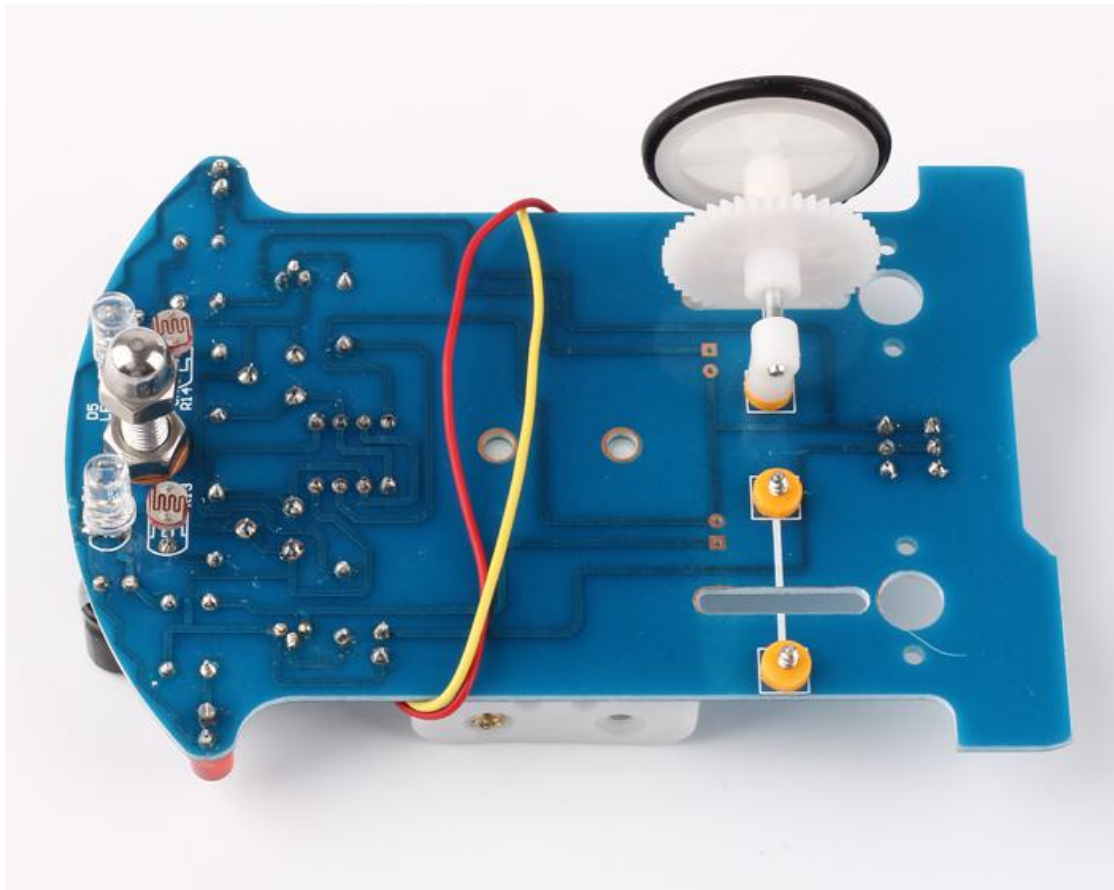




2.5 Put a three-axis sleeve into the end of the steel shaft so that the car side of the wheel assembly to complete.

Holding the wheel by hand, keep the steel shaft level, adjust the position of the three-way sleeve on the end of the steel shaft. The gears on the steel shaft should fall into the gear slot, otherwise the gear position should be adjusted until it meets the requirements.

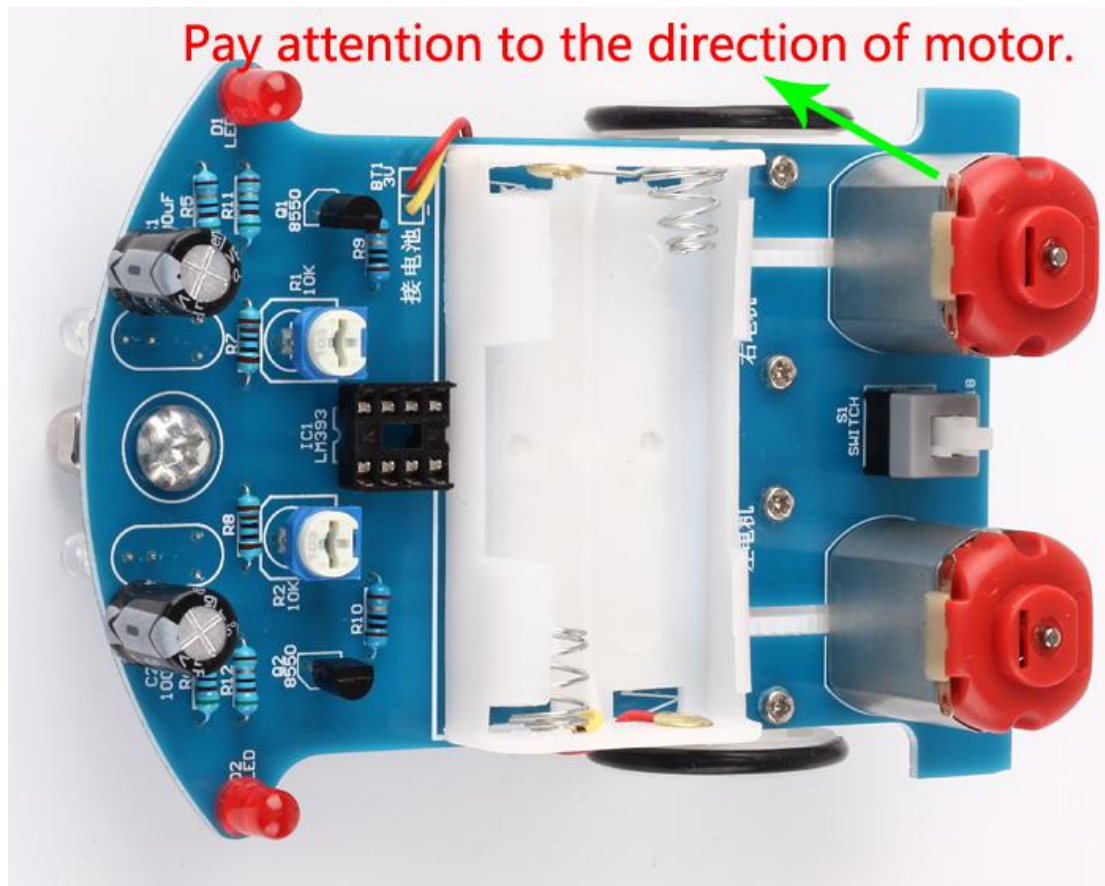
Finally, the two shafts on the steel shaft are fitted into the screw projections of the fixed washers and tightened with a small screwdriver so that the wheel assembly is installed. Install the other side of the wheel assembly in the same way.

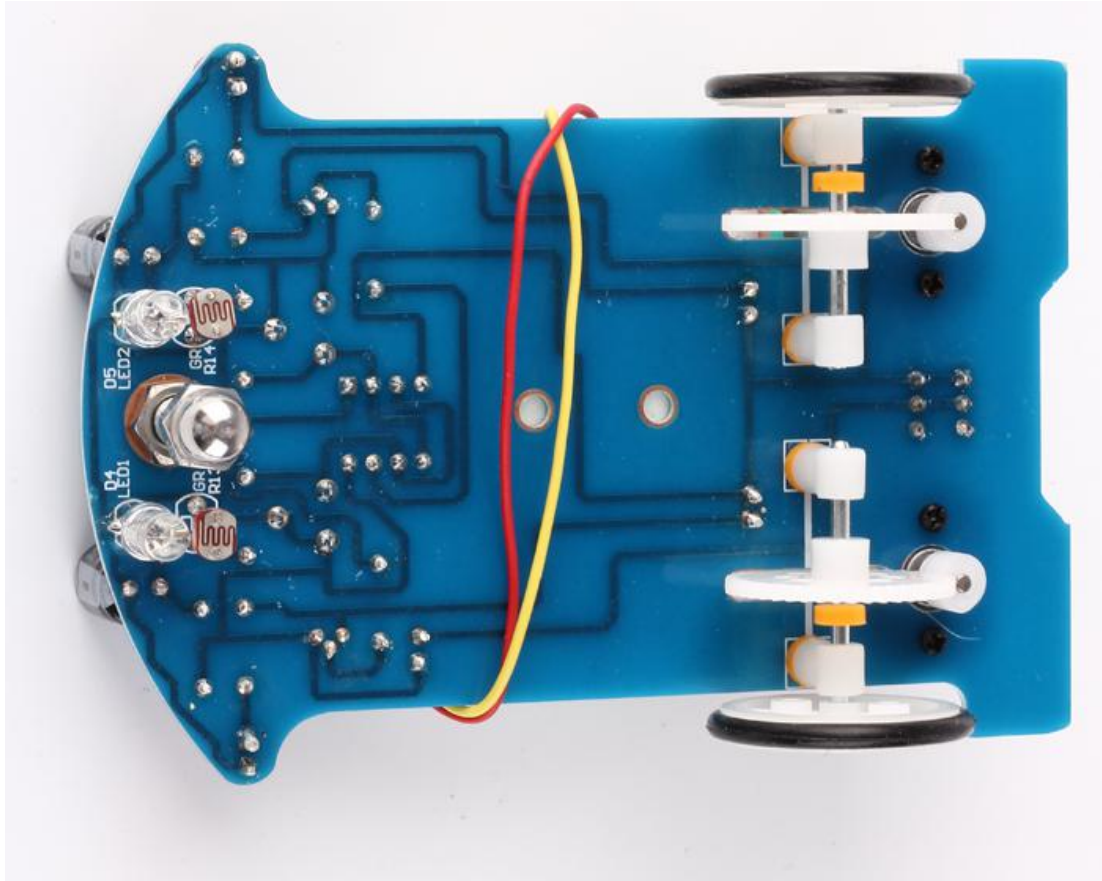


2.6 Install Motor

Insert a worm into the motor shaft, Then thought worm from the front of the circuit board to others. Use two small screws to hold the motor. Pay attention to the direction of motor. Contact motor and PCB by cable.

It can reversed the wire of motor if motor move on the contrary when power on.





3. Test.

3.1 Power on. Check S8550 or 10ohm resistor if motor don't move.

3.2 Install LM393(Pay attention to the direction of IC).

7. Results pictures

