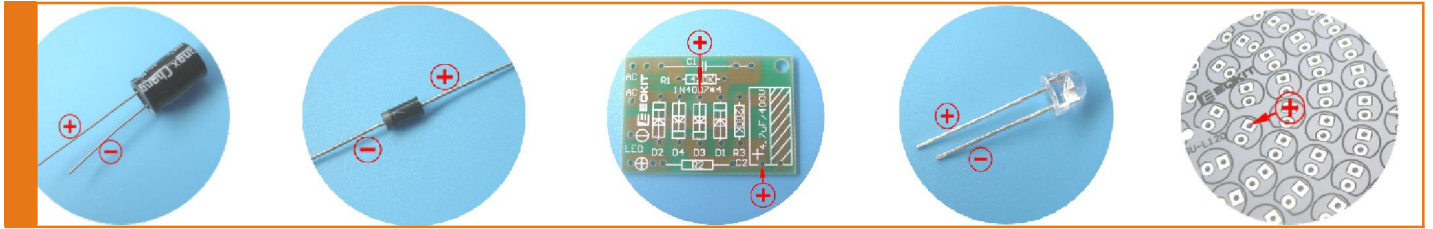


Tools:

- ① soldering iron 30W
- ② solder stick 0.8mm
- ③ multimeter
- ④ tweezers
- ⑤ diagonal pliers

Preparation:

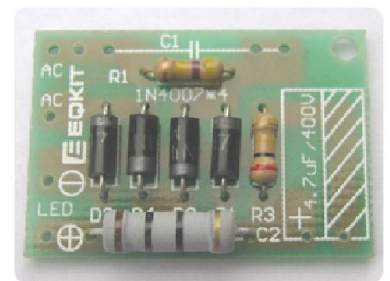
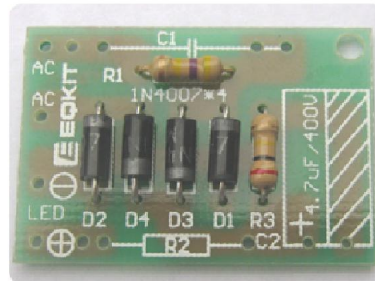
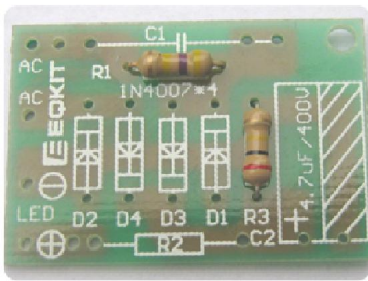
- ① Check the quantity and specification of these components
- ② Check all resistance values with the multimeter
- ③ conform the polarity of the component and the mounting direction on the circuit board in advance



1. Welding two resistors

2. Welding 4pcs diodes

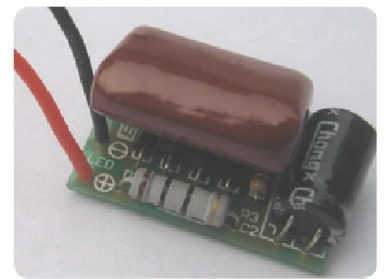
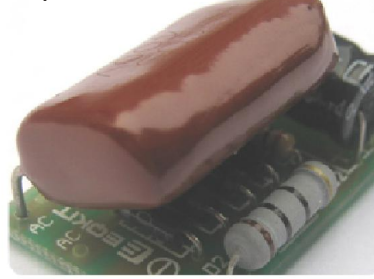
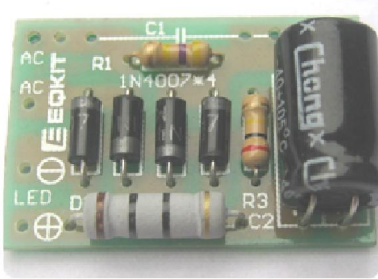
3. Welding 1pcs resistance



4. Welding 1pcs capacitor

5. Welding 1pcs capacitor

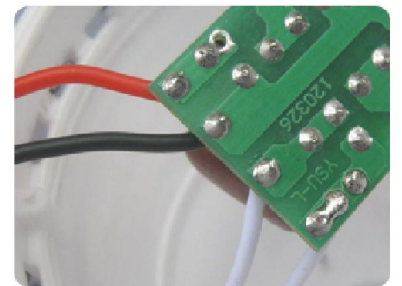
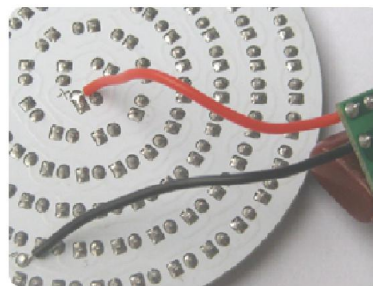
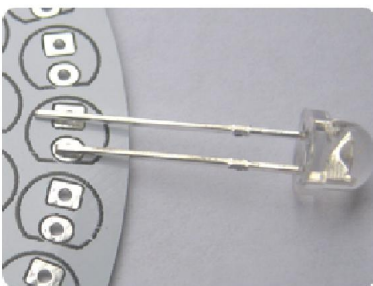
6. Welding two wires



7. Welding LEDs

8. Connect power board to the light board

9. The power supply board is connected to the lamp cap



Now you can test whether all LED lights up, no problem then continue the following steps, or stop to check. **Once the lamp cover is installed, it is not easy to take it down, so plz confirm all the LED can light up before installing the light cover!**

10. Mounting light plate on the lamp shell fixing column, and melting the fixed column by soldering iron to lock the power board.

11. install the Light board in the lamp shell

12. install the light cover

