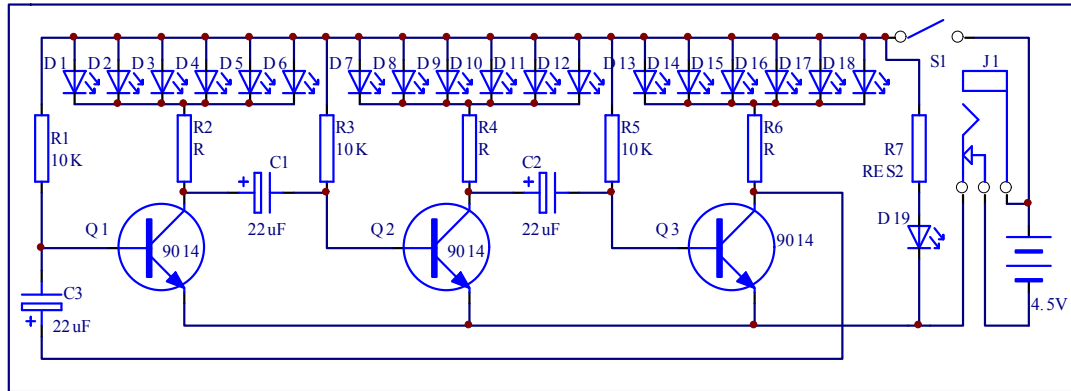


Flash Christmas Tree DIY Kit

1.Schematic



2.Component listing

NO.	Component Name	PCB Marker	Parameter	QTY
CTR-30A				
1	Metal Film Resistor	R6	330ohm	1
2	Metal Film Resistor	R4	1K	1
3	Metal Film Resistor	R2	2K	1
4	Metal Film Resistor	R1,R3,R5,R7	10K	4
5	Electrolytic Capacitor	C1-C3	47uF 16V	3
6	Red LED	D1-D6,D19	3mm	7
7	Yellow LED	D7-D12	3mm	6
8	Green LED	D12-D18	3mm	6
9	S9014 Transistor	Q1-Q3	TO-92	3
10	PCB	CTR-30A		1
CTR-30B				
11	Metal Film Resistor	R6	330ohm	1
12	Metal Film Resistor	R4	1K	1
13	Metal Film Resistor	R2	2K	1
14	Metal Film Resistor	R1,R3,R5	10K	3
15	Electrolytic Capacitor	C1-C3	47uF 16V	3
16	Green	D1-D6	3mm	6
17	Yellow LED	D7-D12	3mm	6
18	Red LED	D12-D18	3mm	6
19	S9014 Transistor	Q1-Q3	TO-92	3
20	PCB	CTR-30B		1
CTR-30C				

21	Self-Locking Switch	S1	5.8mm	1
22	DC Power Socket	J1	3.5mm	1
23	Battery Box		AA*3	1
24	USB to DC 3.5mm Cable		80cm	1
25	Screw		M2*8mm	2
26	Nut		M2	2
27	PCB	CTR-30C		1

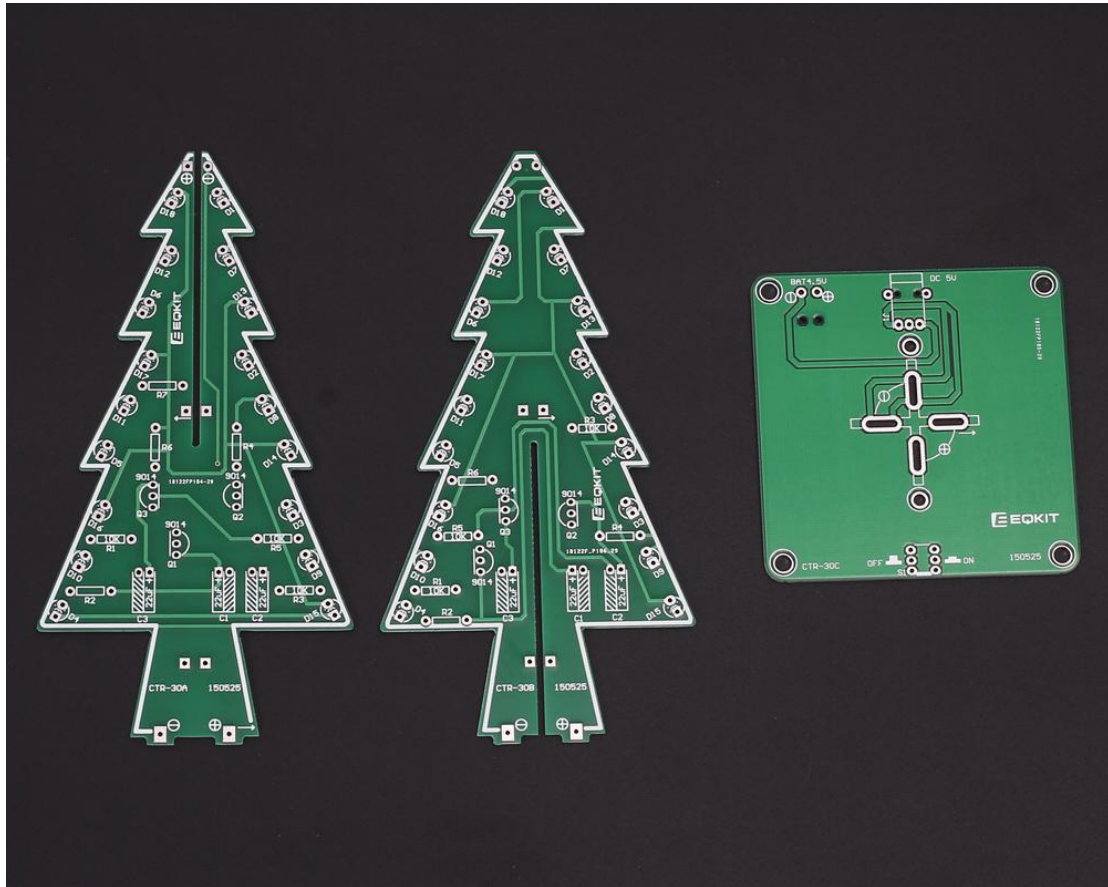
NOTE:Users can complete the installation by PCB silk screen and component listing.

3.Component Description



- 1>. 1pcs 330ohm Metal Film Resistor
- 2>. 1pcs 1K Metal Film Resistor
- 3>. 1pcs 2K Metal Film Resistor
- 4>. 4pcs 10K Metal Film Resistor
- 5>. 3pcs 47uF 16V Electrolytic Capacitor
- 6>. 7pcs 3mm Red LED
- 7>. 6pcs 3mm Yellow LED
- 8>. 6pcs 3mm Green LED
- 9>. 3pcs S9014 Transistor
- 10>. 1pcs PCB CTR-30A
- 11>. 1pcs 330ohm Metal Film Resistor
- 12>. 1pcs 1K Metal Film Resistor
- 13>. 1pcs 2K Metal Film Resistor
- 14>. 3pcs 10K Metal Film Resistor
- 15>. 3pcs 47uF 16V Electrolytic Capacitor
- 16>. 6pcs 3mm Green LED
- 17>. 6pcs 3mm Yellow LED
- 18>. 6pcs 3mm Red LED
- 19>. 3pcs S9014 Transistor
- 20>. 1pcs PCB CTR-30B
- 21>. 1pcs Self-Locking Switch
- 22>. 1pcs 3.5mm DC Power Socket
- 23>. 1pcs AA*3 Battery Box
- 24>. 1pcs USB to DC 3.5mm Cable
- 25>. 2pcs Screw M2*8mm
- 26>. 2pcs Nut M2
- 27>. 1pcs PCB CTR-30C

4. Installation Steps



1>. Install CTR-30A



Step 1: Install 1pcs Metal Film Resistor 330ohm on R6, 1pcs 1K on R4, 1pcs 2K on R2



Step 2: Install 3pcs 10K Metal Film Resistor on R1,R3,R5



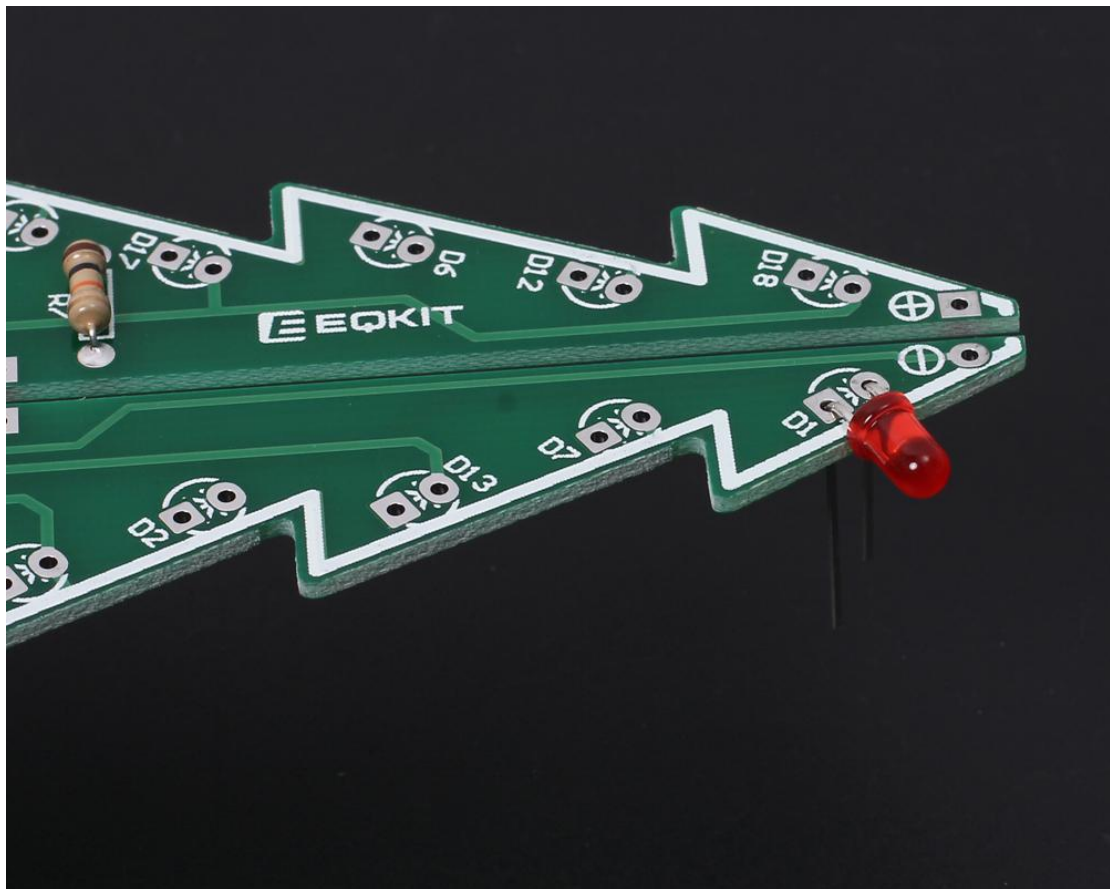
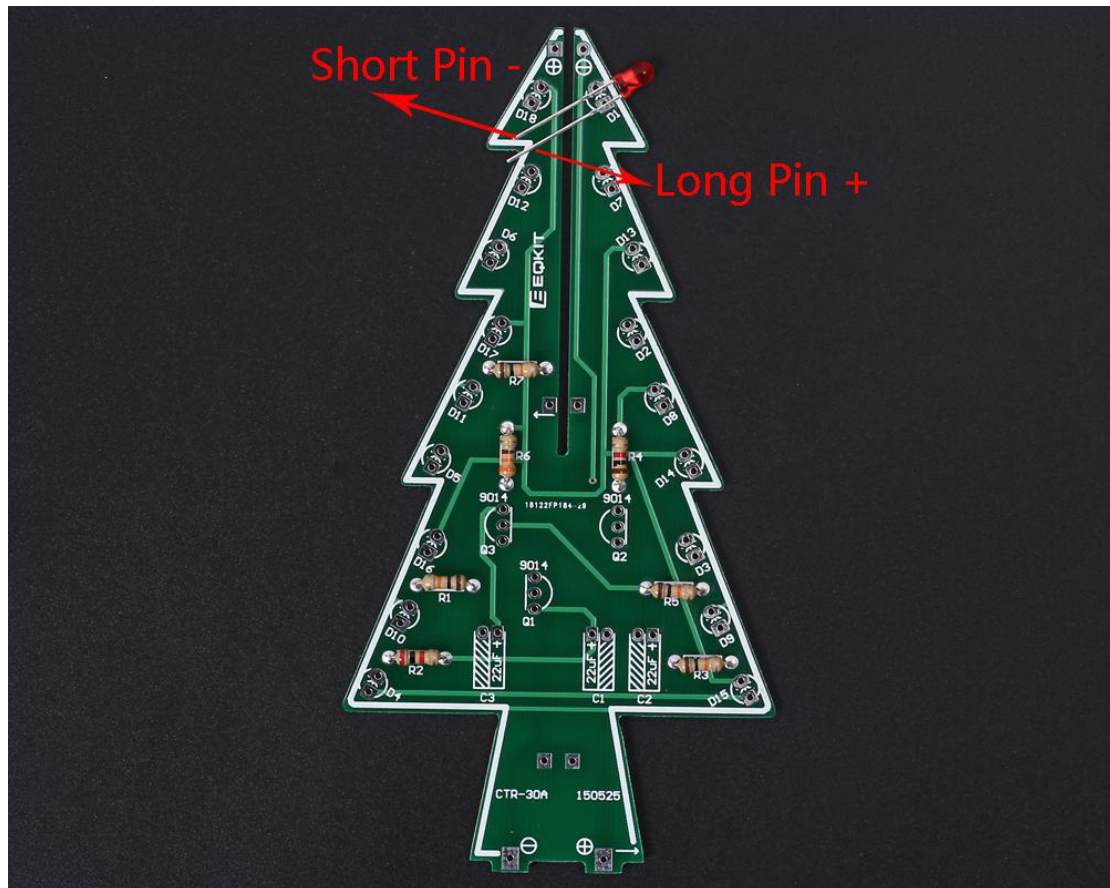
Step 3: Install 1pcs 10K Metal Film Resistor on R7



Step 4: Install 6pcs Red LED on D1-D6.

Tips:

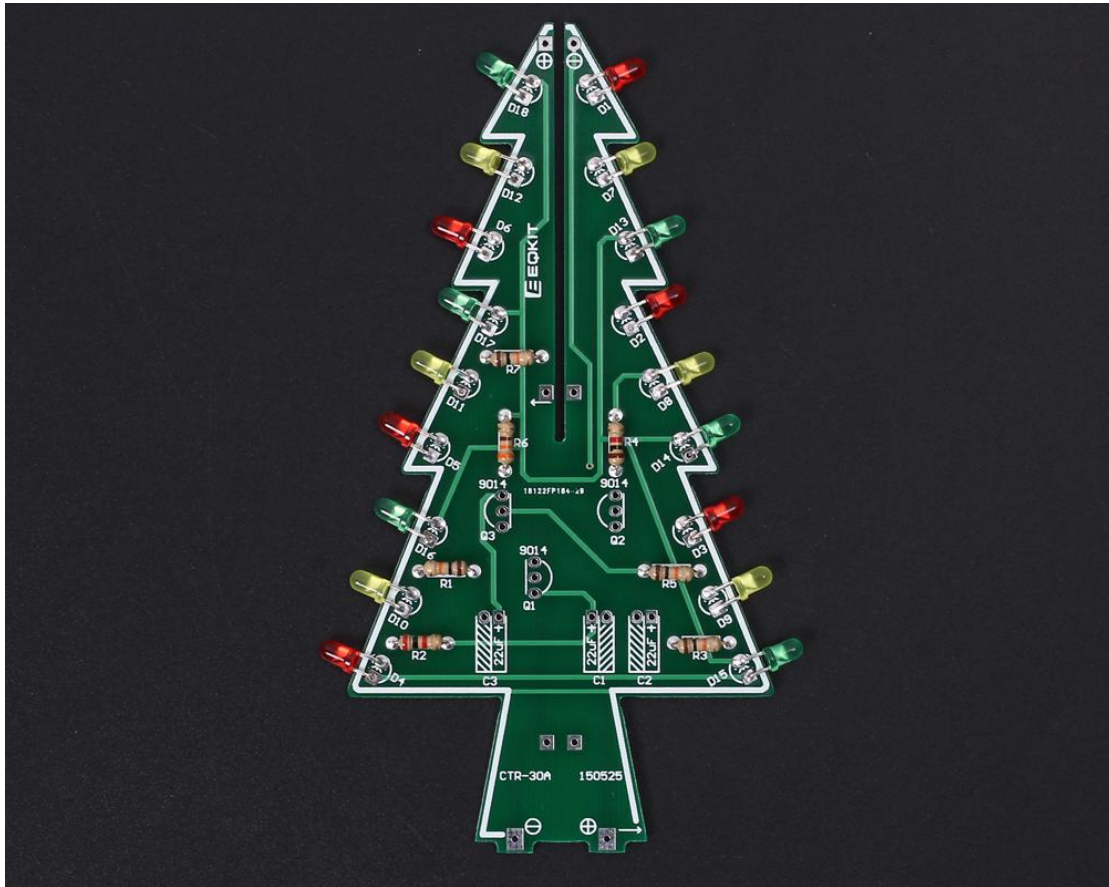
- A. Note the direction of the LED
- B. Control distance between PCB edge and LED head(Two ways).
 - 1). User can bend the LED pin at first after determining the distance and then insert LED to PCB through hole;
 - 2). Insert LED to PCB through hole at first. Then determine the distance. Bend the LED pin at last.



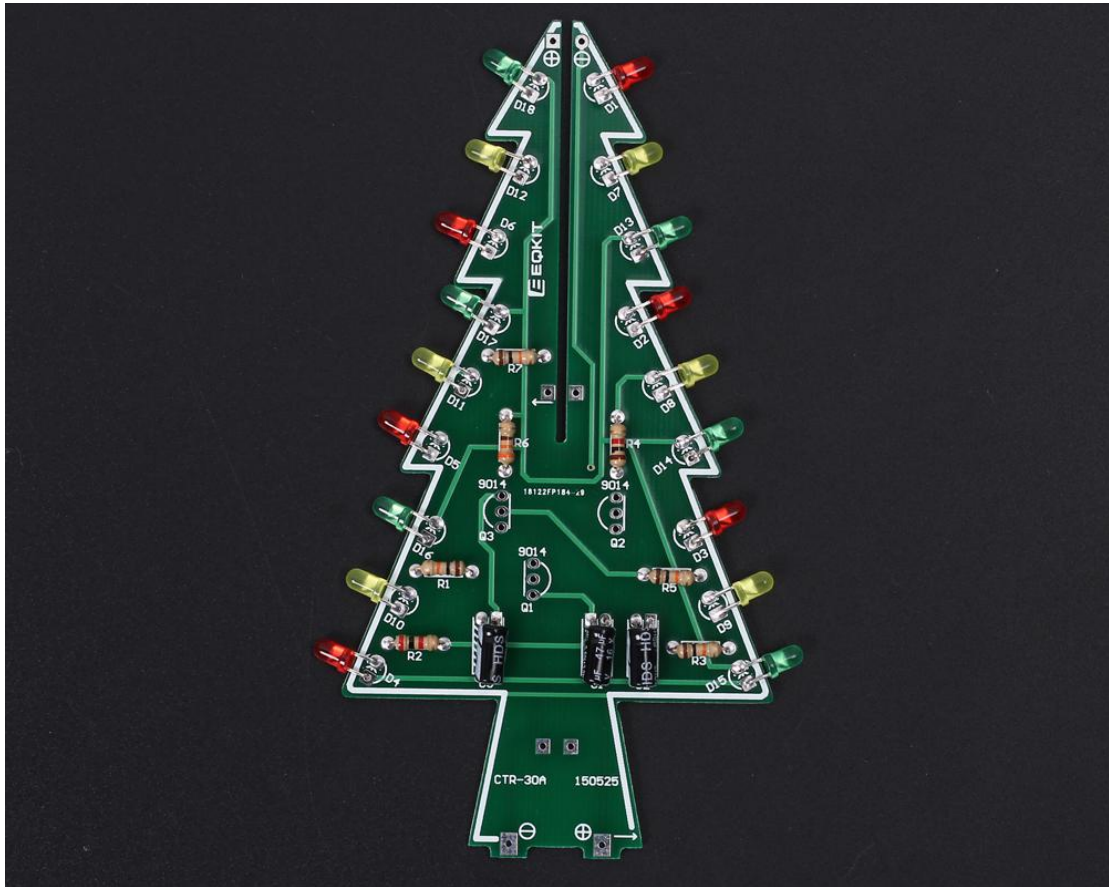




Step 5: Install 6pcs Yellow LED on D7-D12, 6pcs Green LED on D13-D18



Step 6: Install 3pcs 47uF 16V Electrolytic Capacitor



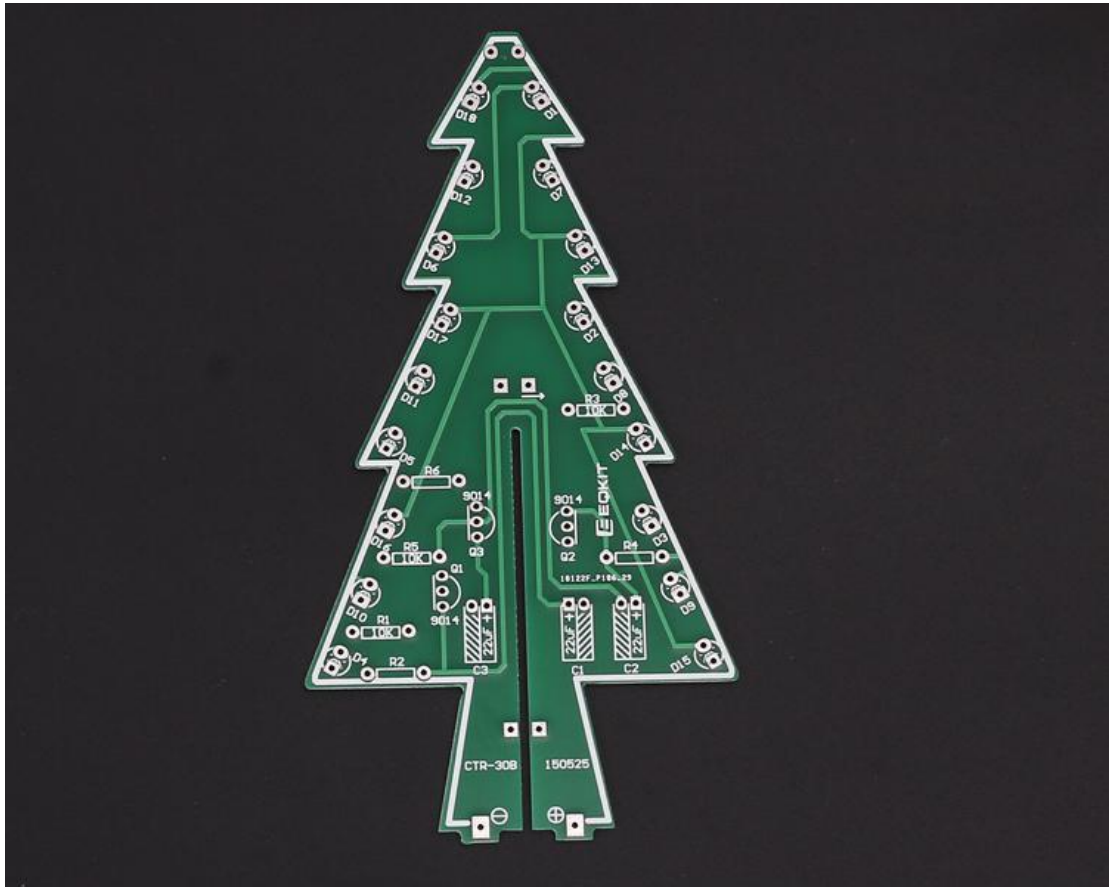
Step 7: Install 3pcs TO-92 S9014 Transistor

Tips: It is better to bend S9014's pin so that 2pcs PCB CTR-30A and CTR-30B can better splicing.

OK, CTR-30A has been installed completed.



2>. Install CTR-30B



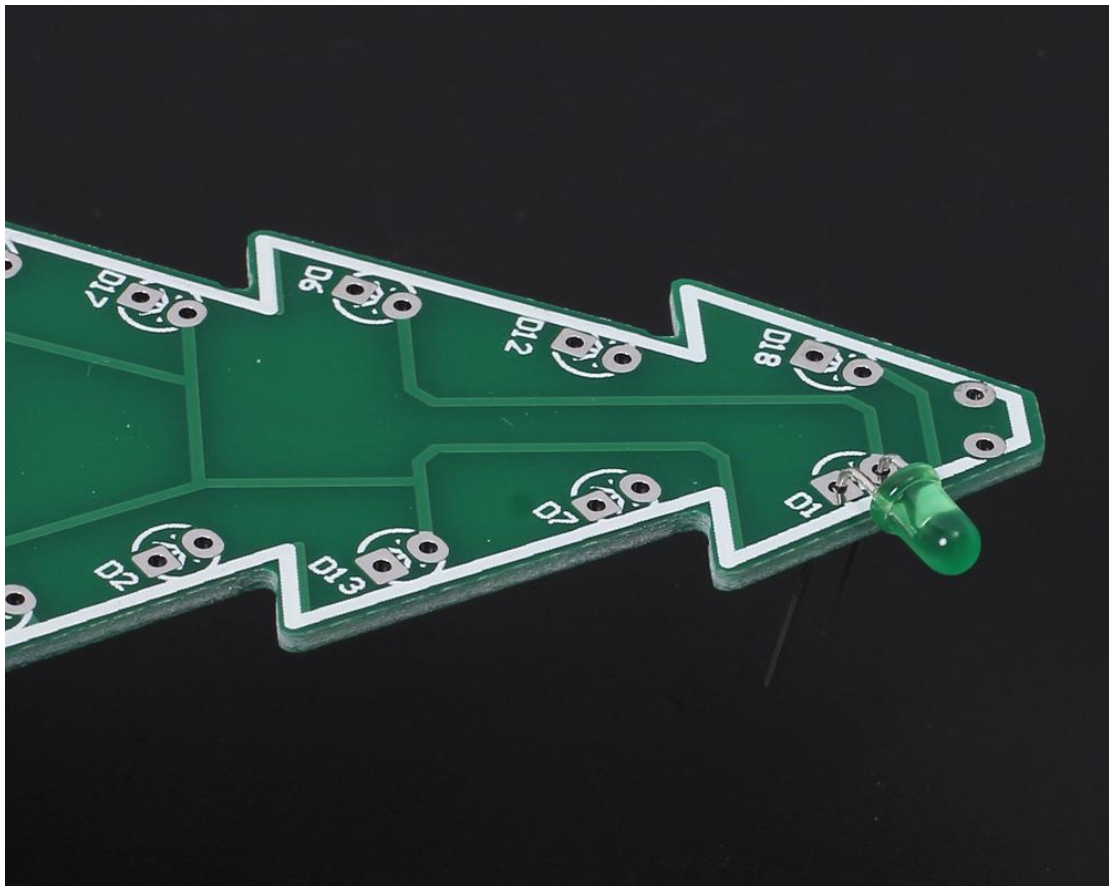
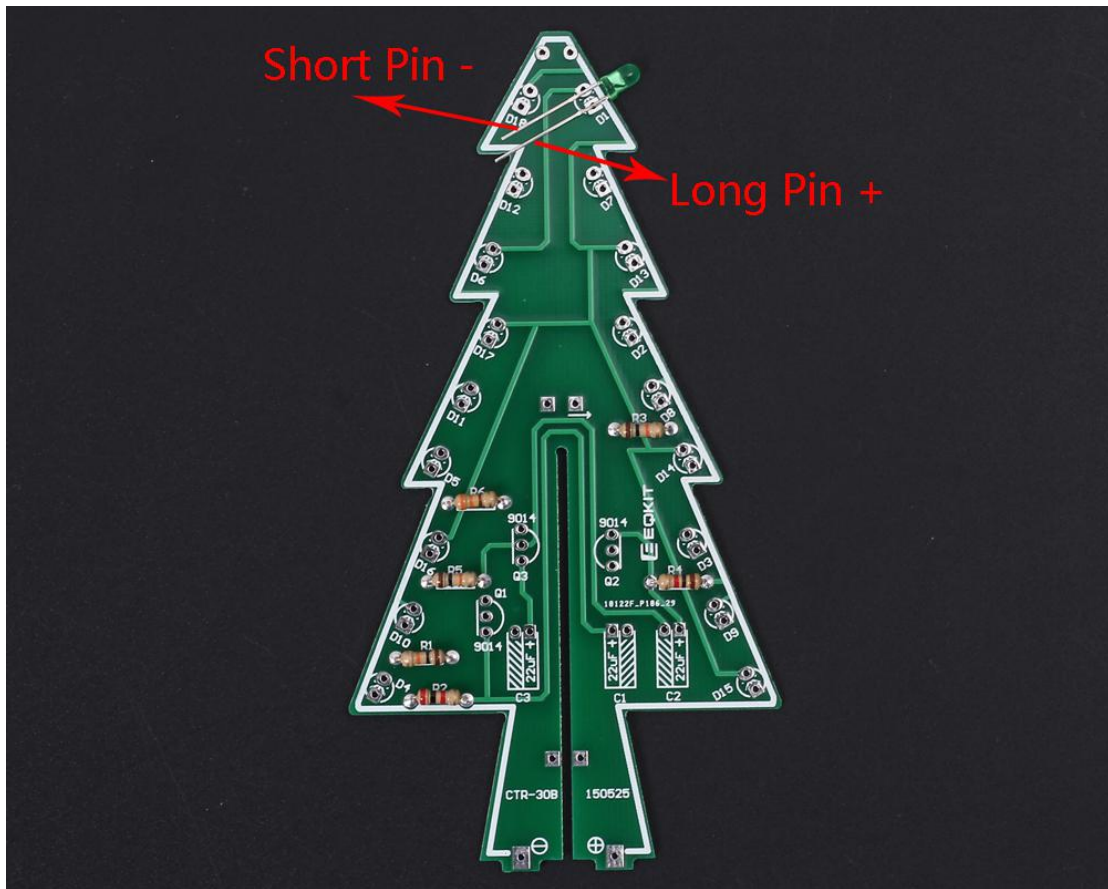
Step 8: Install 1pcs Metal Film Resistor 330ohm on R6, 1pcs 1K on R4, 1pcs 2K on R2

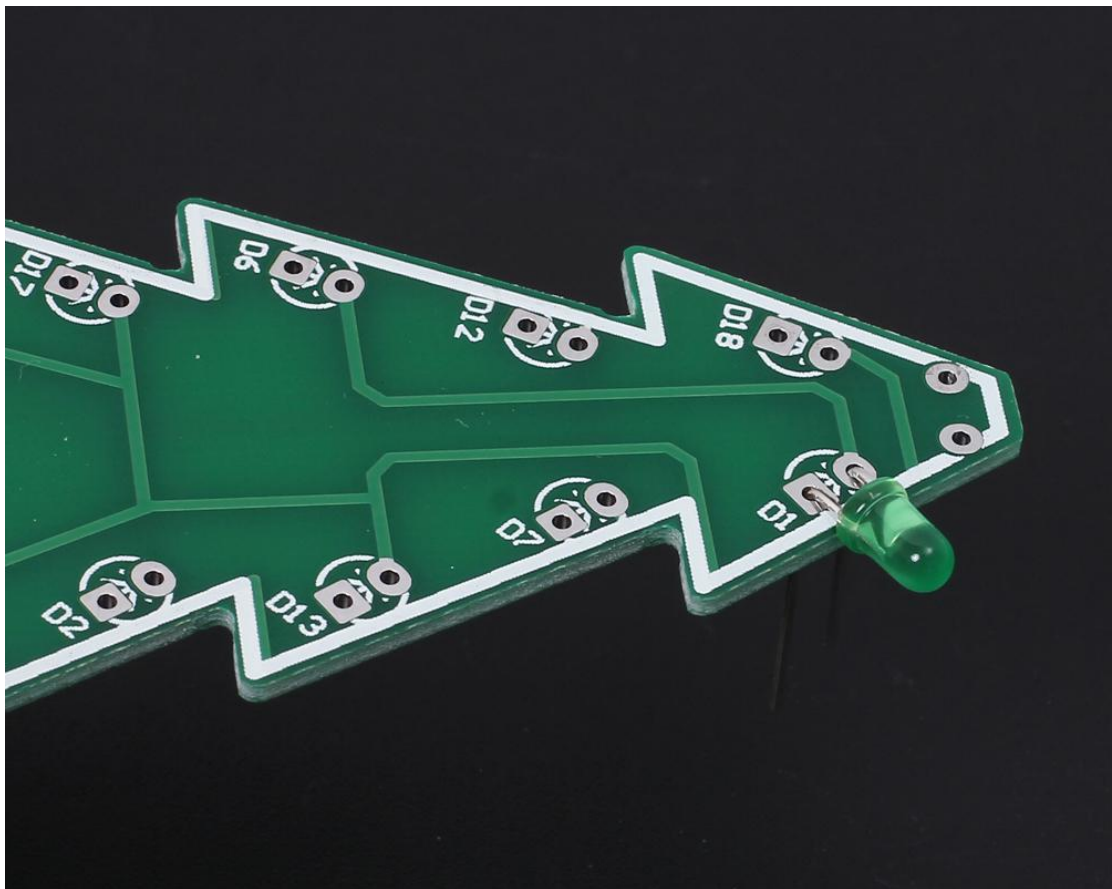
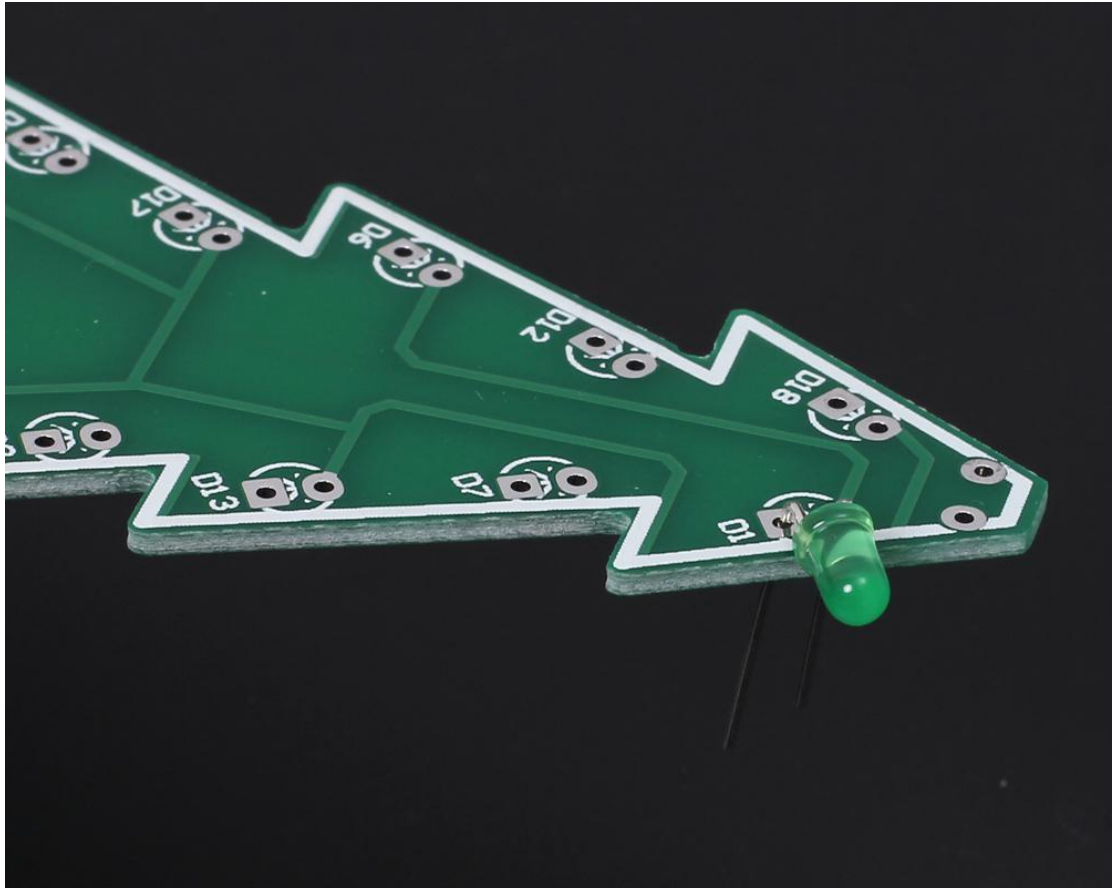


Step 9: Install 3pcs 10K Metal Film Resistor on R1,R3,R5



Step 10: Install 6pcs Green LED on D1-D6.







Step 11: Install 6pcs Red LED on D7-D12, 6pcs Yellow LED on D13-D18



Step 12: Install 3pcs 47uF 16V Electrolytic Capacitor



Step 13: Install 3pcs TO-92 S9014 Transistor

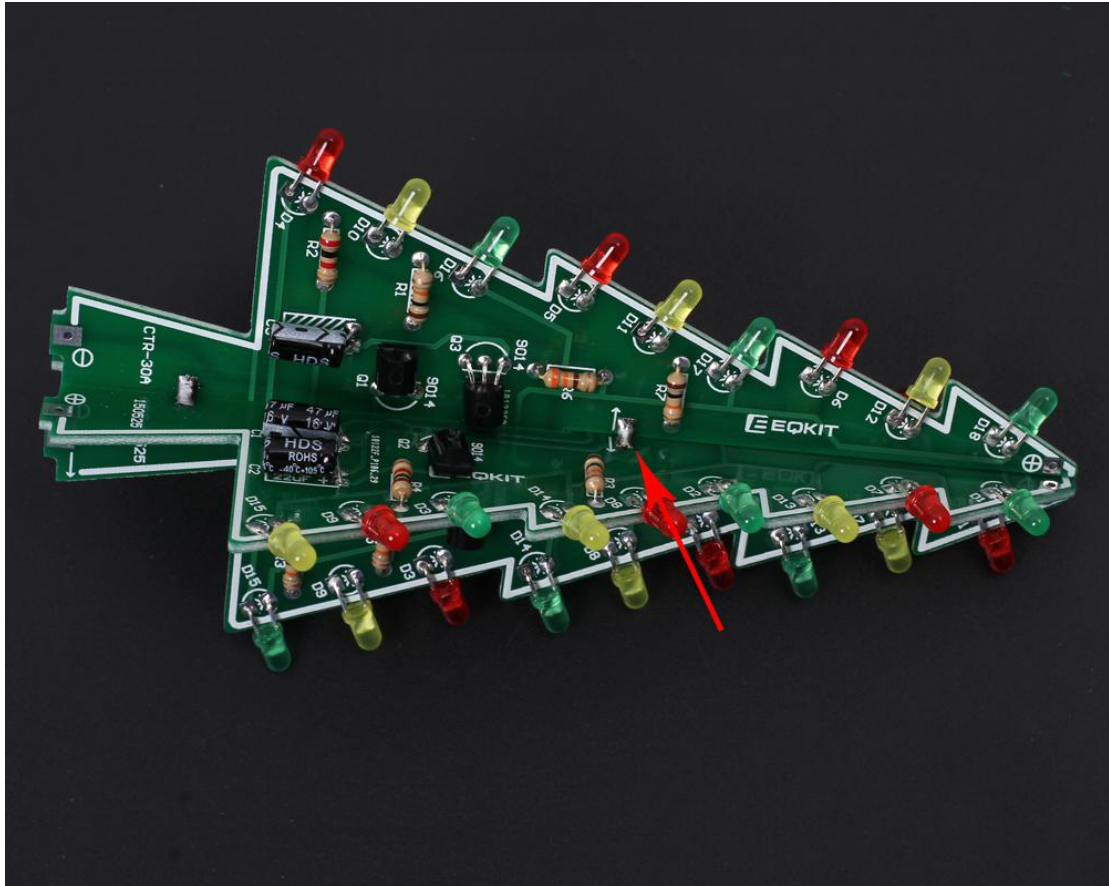


Step 14: Connect 5V to CTR-30A and CTR-30B. Preliminary welding success if LEDs are blinking automatically

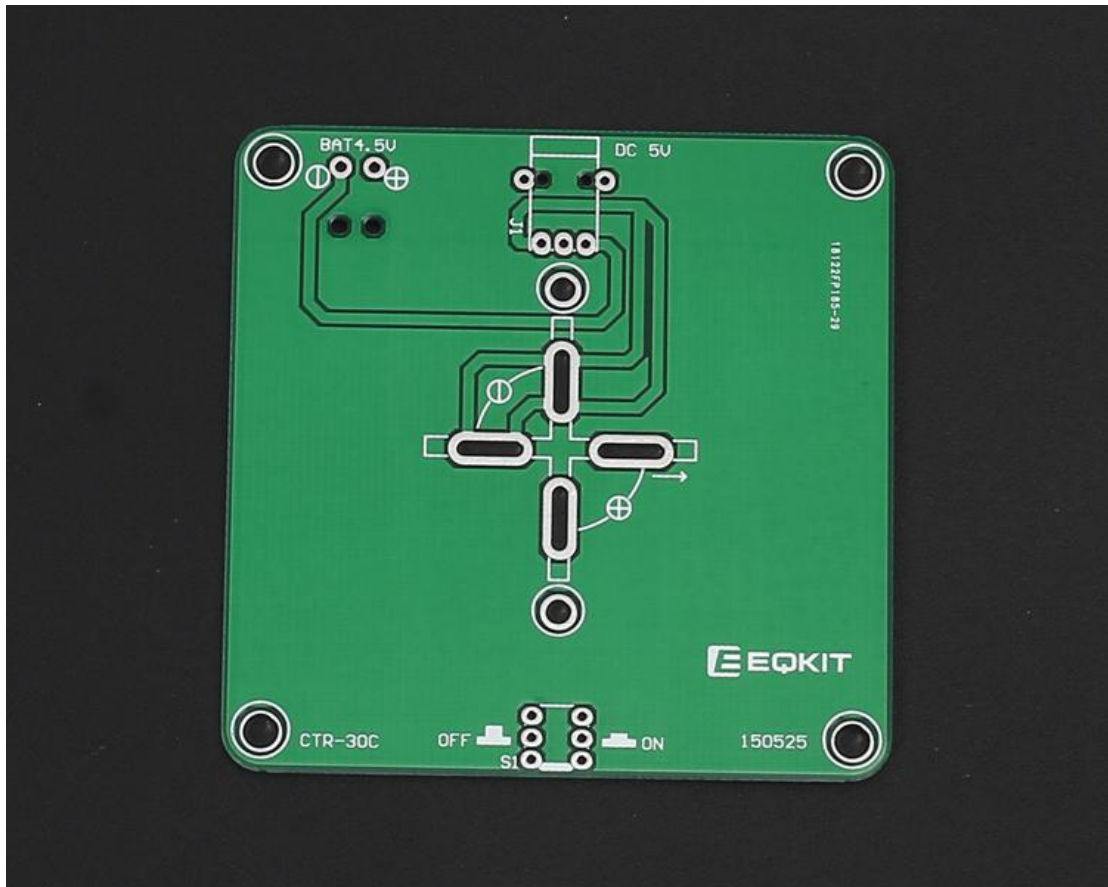
3>. Stitching CTR-30A and CTR-30B

Step 15: Align the two positioning heads on CTR-30A and CTR-30B and then fixed with tin.

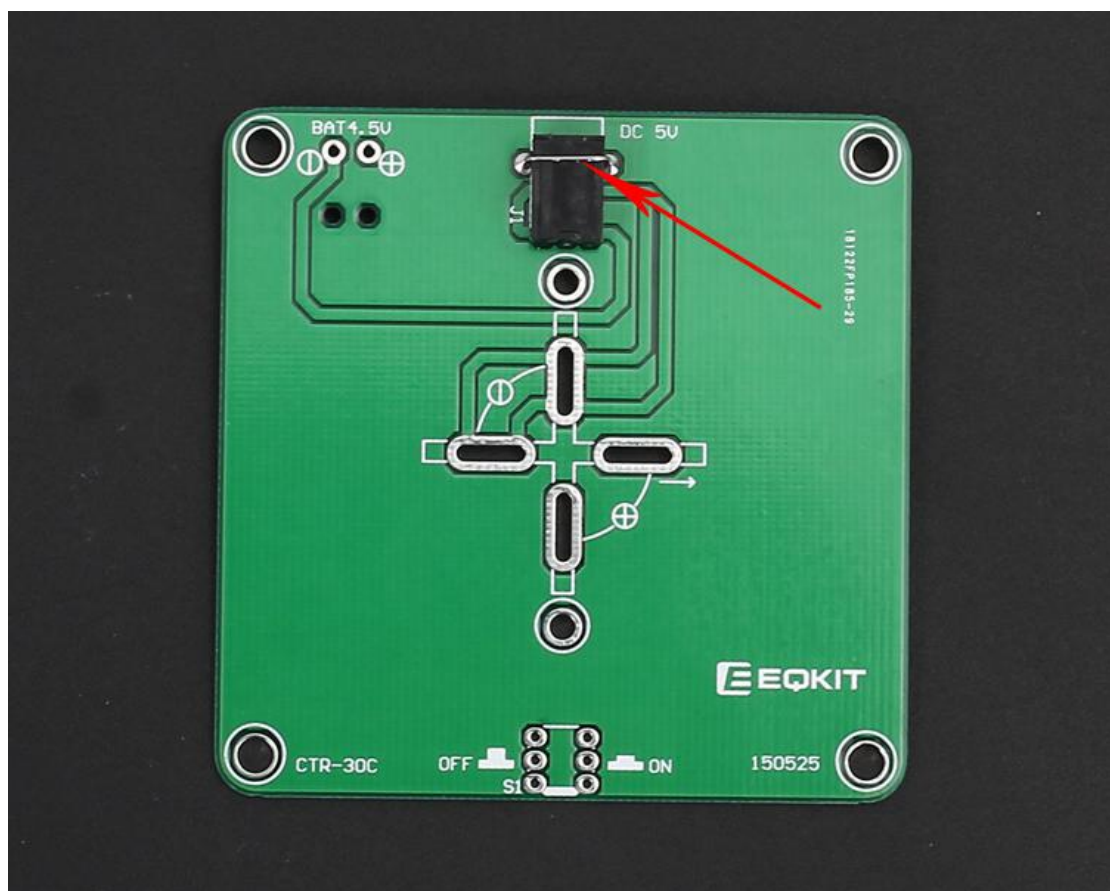
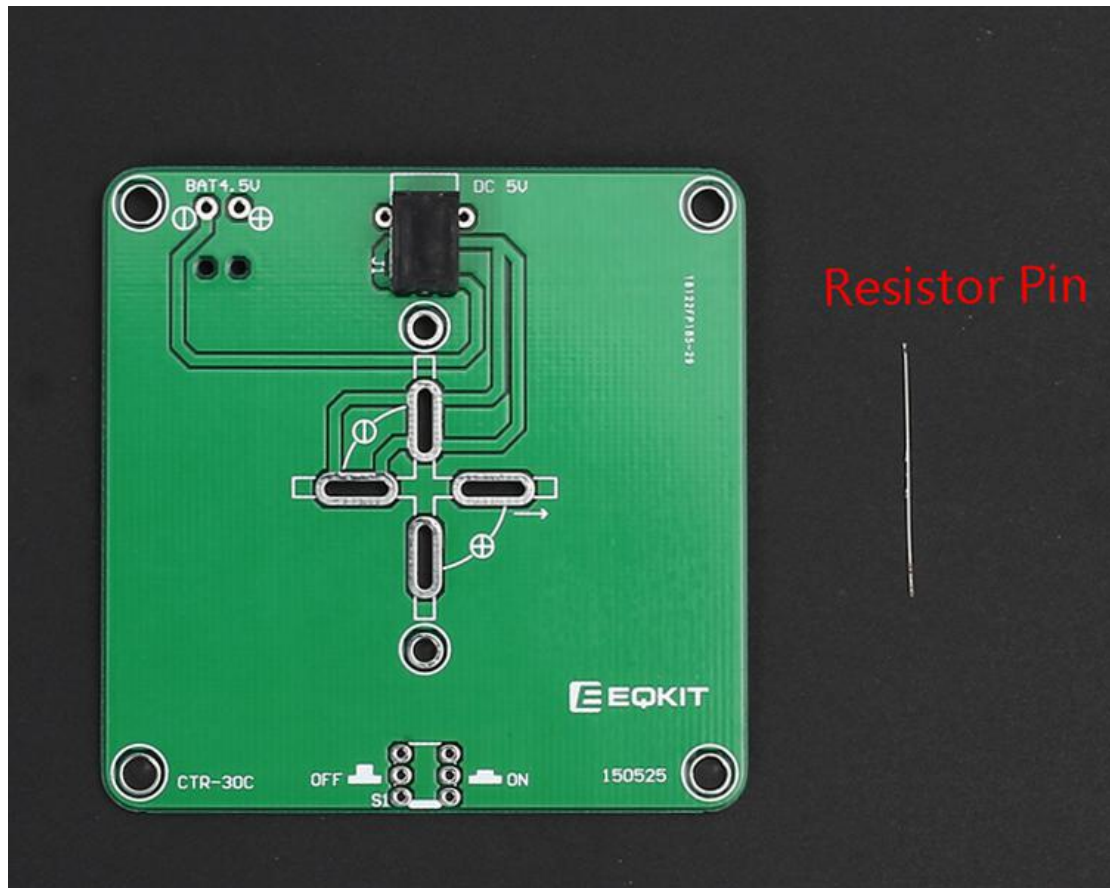




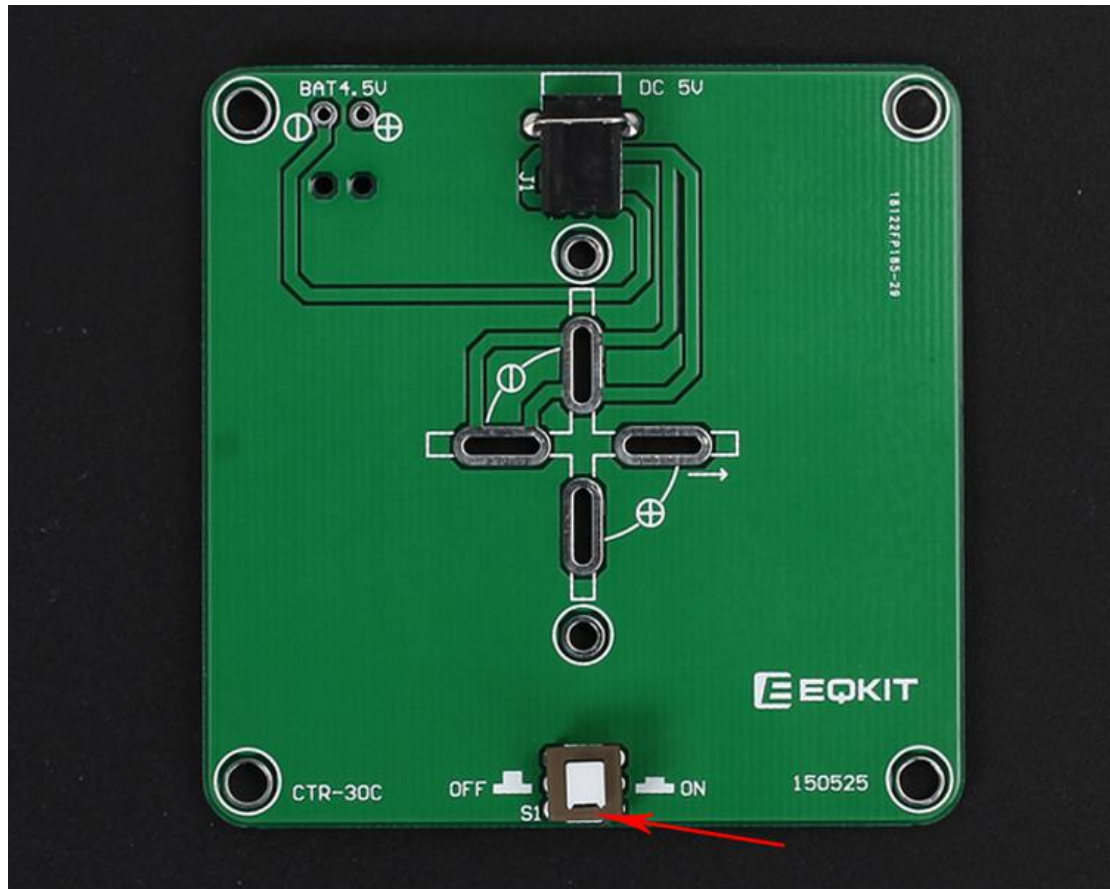
4>. Install CTR-30C



Step 16: Install Power Socket. Use a superfluous pin to fixed the power supply socket. This pin can come from resistor.



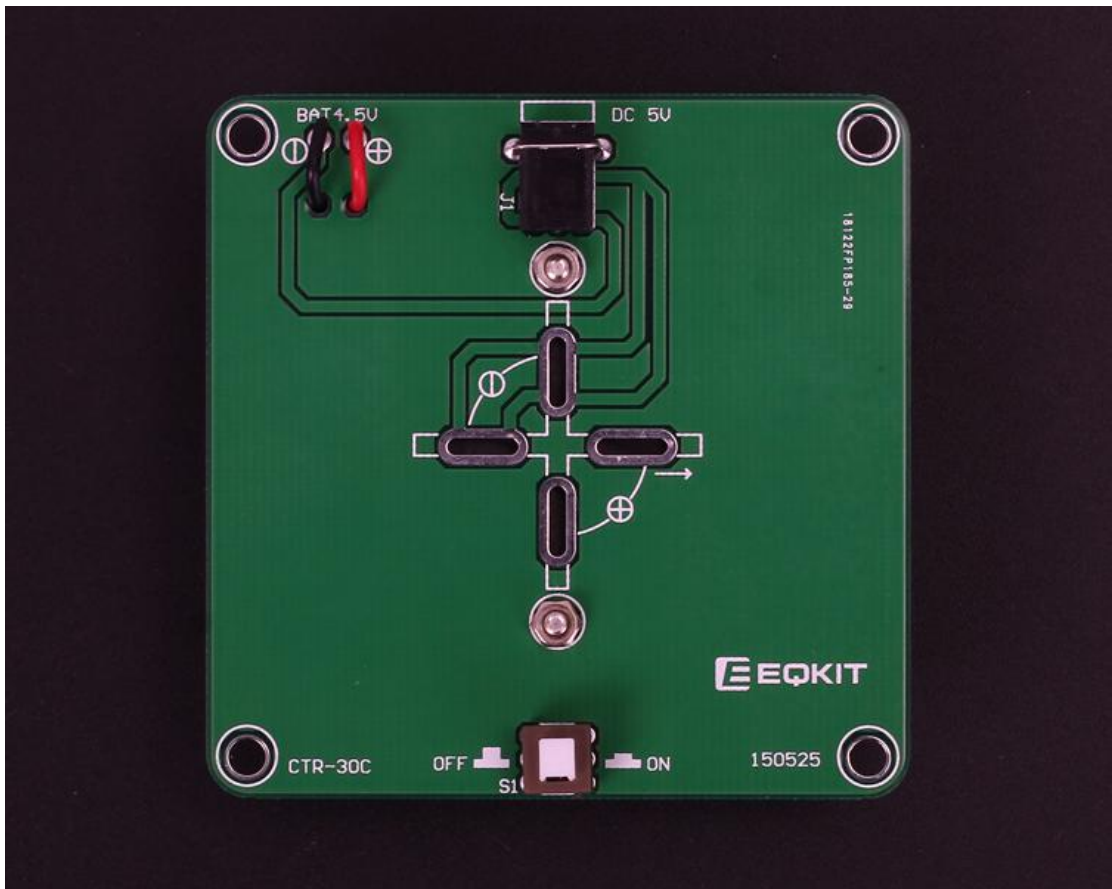
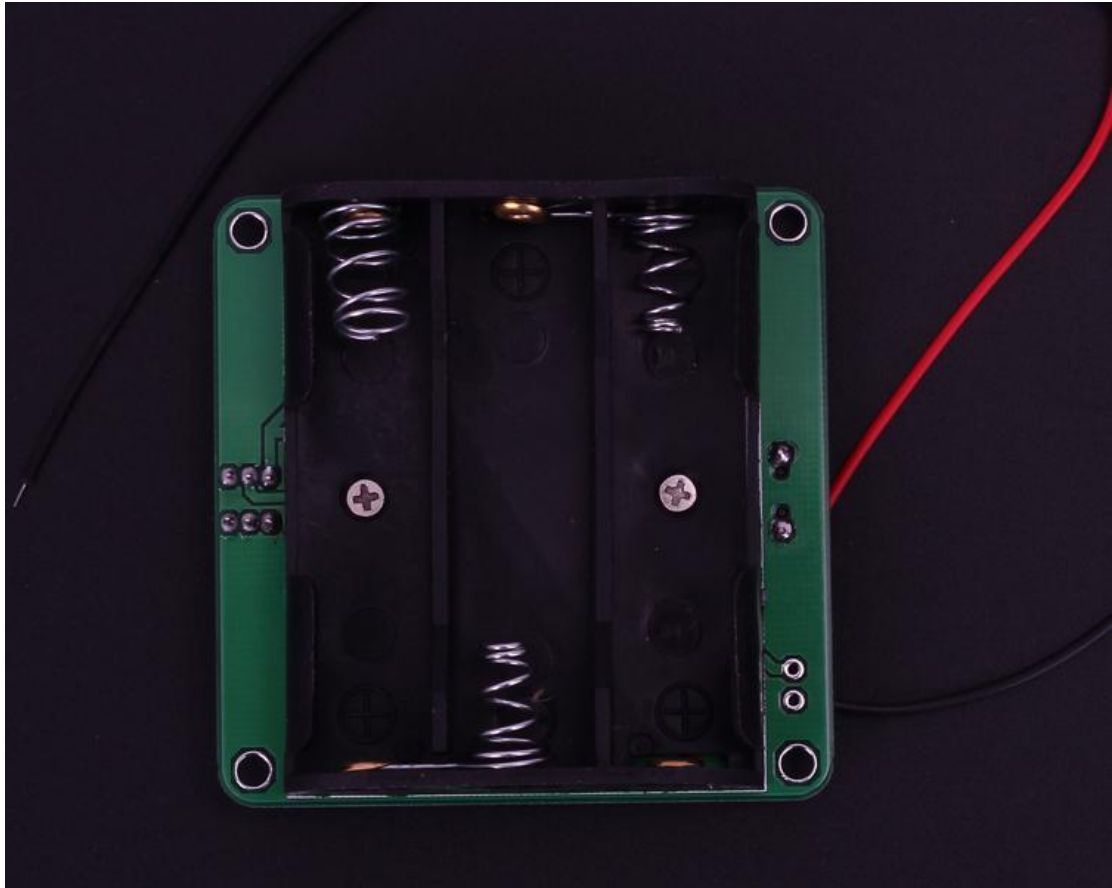
Step 17: Install 1pcs Self-Locking Switch. Note the direction of switch. The concave side is close to the PCB edge.



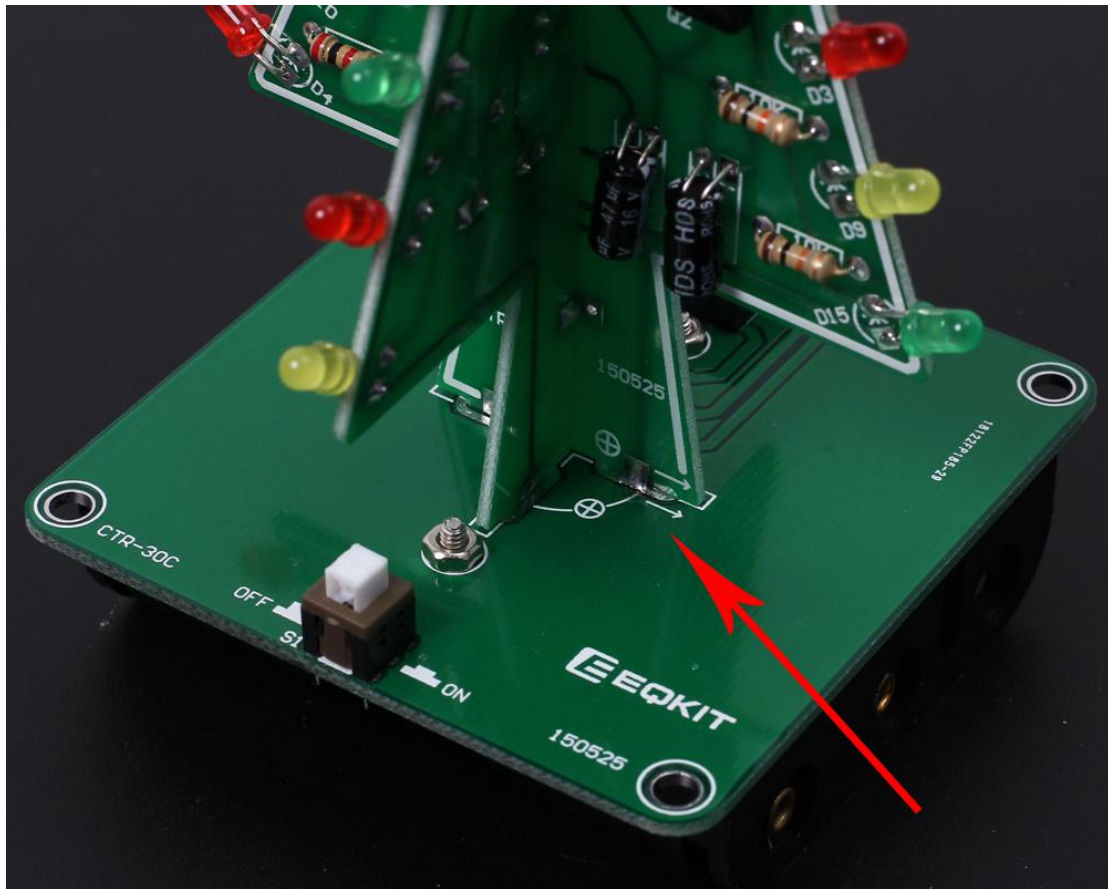
Step 18: Install battery box and fixed by screw/nut.

Tips:

First peel the insulation of the wire, and then welding fixed, and then cut off the excess wire



Step 19: Fixed CTR-30A and CTR-30B on CTR-30C. Align the two positioning heads and then fixed with tin.



Step 20: Install the top LED. Note the positive and negative of LED. At this point, the installation is complete!!



7.Effect demonstration













