

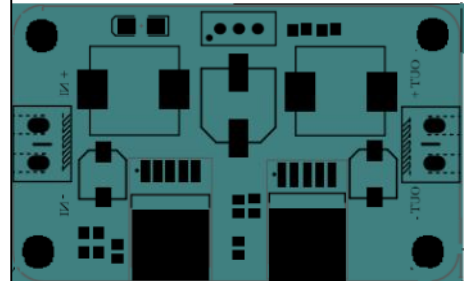
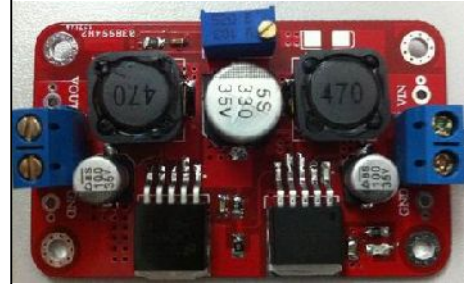


# 升降压模块

Automatic boosting and step-down module

自动升降压模块可以实现在一定的范围内输入电压, 然后输出电压自动调节(不受输入电压的影响). 一个模块集成了升降压两个功能, 使得用户可以自由的调节输出电压不受输入电压的影响.

Module can realize automatic lifting pressure within a certain range of input voltage, and then automatically adjust the output voltage (is not affected by input voltage). A module integrates the function of lifting pressure two, makes users can freely adjust the output voltage is not affected by input voltage.



## I, 额定工作参数 (Rated parameters) :

输入电压:	3.5-28V	输入电流:	1A
Input voltage:		Input current:	
输出电压:	1.25-26V	输出电流:	1A
Output voltage:		Output current:	

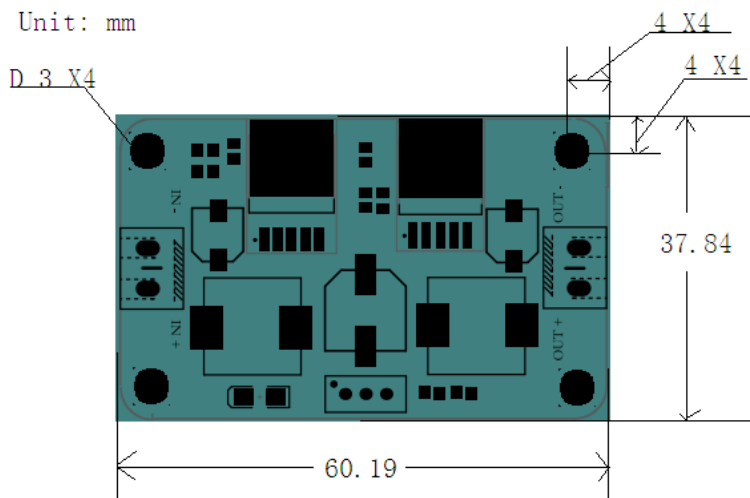
## II, 极限工作参数 (Absolute Maximum Rating)

输入电压:	32V	输入电流:	3A
Input voltage:		Input current:	
输出电压:	32V	输出电流:	3A
Output voltage:		Output current:	



## II, 机械图 (physic diagram)

Unit: mm



## III, 注意事项

1. 模块工作中由于开关频率较低, 在输入电流较大时电感会有些高频噪声, 但不影响使用.

## III, Notes

1. Module work due to the low switching frequency, inductance when the input current is larger have some high frequency noise, but not influence use.