

Hearts Shaped LED DIY Kit

1. Introduction

This is arrow through two hearts shaped LED kit parts. This DIY product need you solder it by yourself.

2. Parameter

NO.	Parameter	Value
1	Power Supply	5V-60mA
2	Power Supply Interface	USB or 2P Male Pin
3	Led Color	RGB
4	Control mode	Button
5	PCB Size	100*70mm
6	PCB Material	FR4

3. Function

- 1>. 85pcs LED display
- 2>. Music ON/OFF control by button
- 3>. Switch the display at any time

4. Feature

- 1>. With music + high quality buzzer.
- 2>. New animation mode, flashing according to the heart.
- 3>. With new high quality STC12C5A60S2 chip.
- 4>. The electrical parameters have been strictly calculated, and the

circuit board has been optimized for electrical performance.

5>. Beautiful appearance: red PCB + arrow through two hearts style + button+ exquisite butterfly pattern.

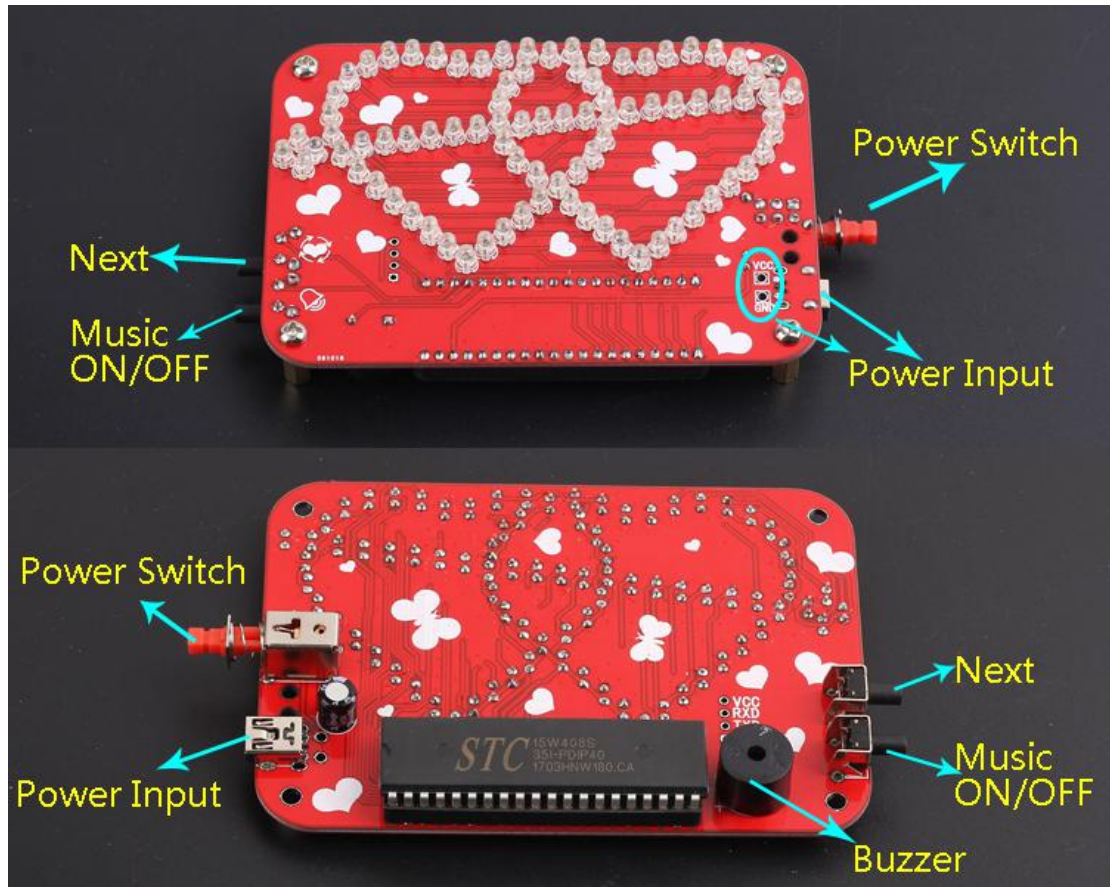
6>. With 15 animation +11 music

7>. The high quality acrylic crystal shell with high precision laser cutting and new structural design is reliable and beautiful.

5. Component listing

NO.	Component Name	Parameter	QTY
1	Buzzer	5V 12mm	1
2	Electrolytic Capacitor	16V 220uF	1
3	MINI USB	5P	1
4	Button		2
5	Power Switch		1
6	USB Cable		1
7	STC12C5A60S2	DIP-40	1
8	IC Socket	DIP-40	1
9	RGB LED	3mm	1
10	Copper Pillar	M3*12mm	4
11	Screw	M3*5mm	4
12	PCB	100*70	1

6. Basic instruction



- 1>. Power Input: 2kinds input type USB or Male Pin;
- 2>. Power Switch: Control power;
- 3>. Buzzer: Play voice;
- 4>. Next: Display next animation and music;
- 5>. Music ON/OFF: ON or OFF voice playback. Animation is not affected, continue to show.

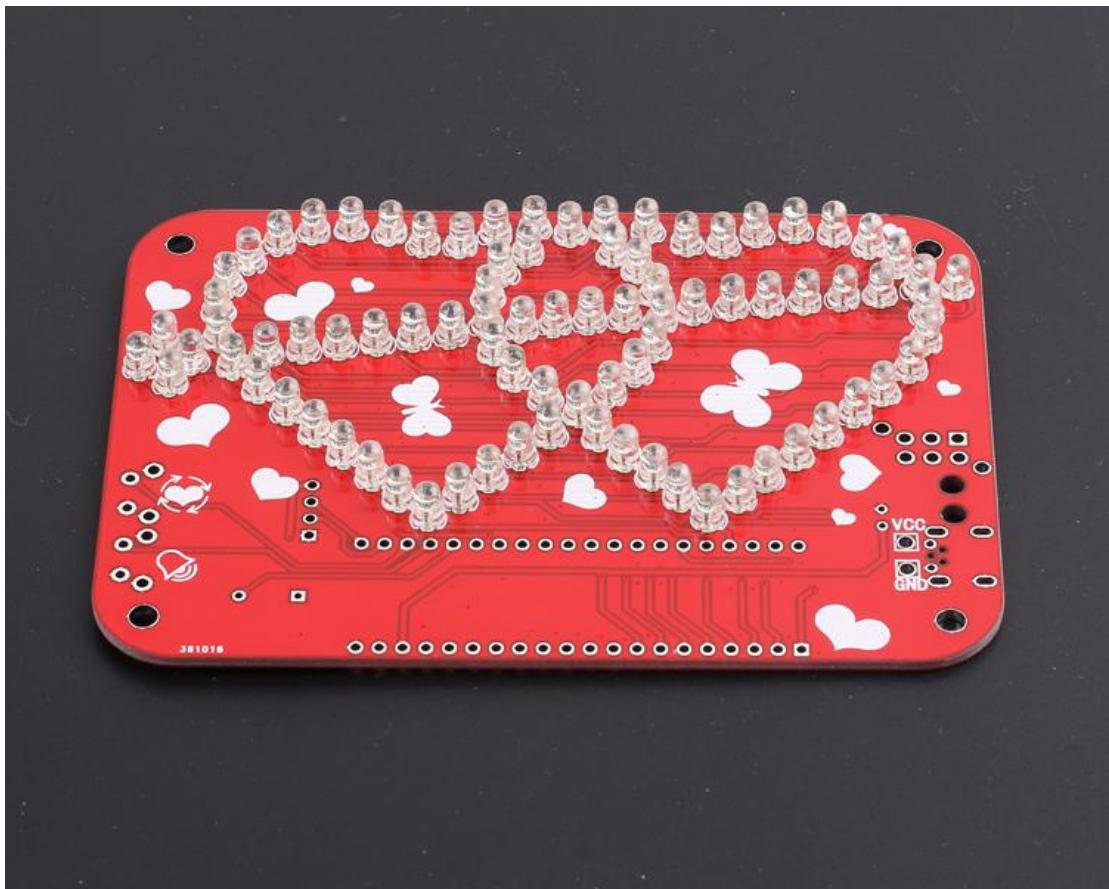
7. Installation Steps

Tips:

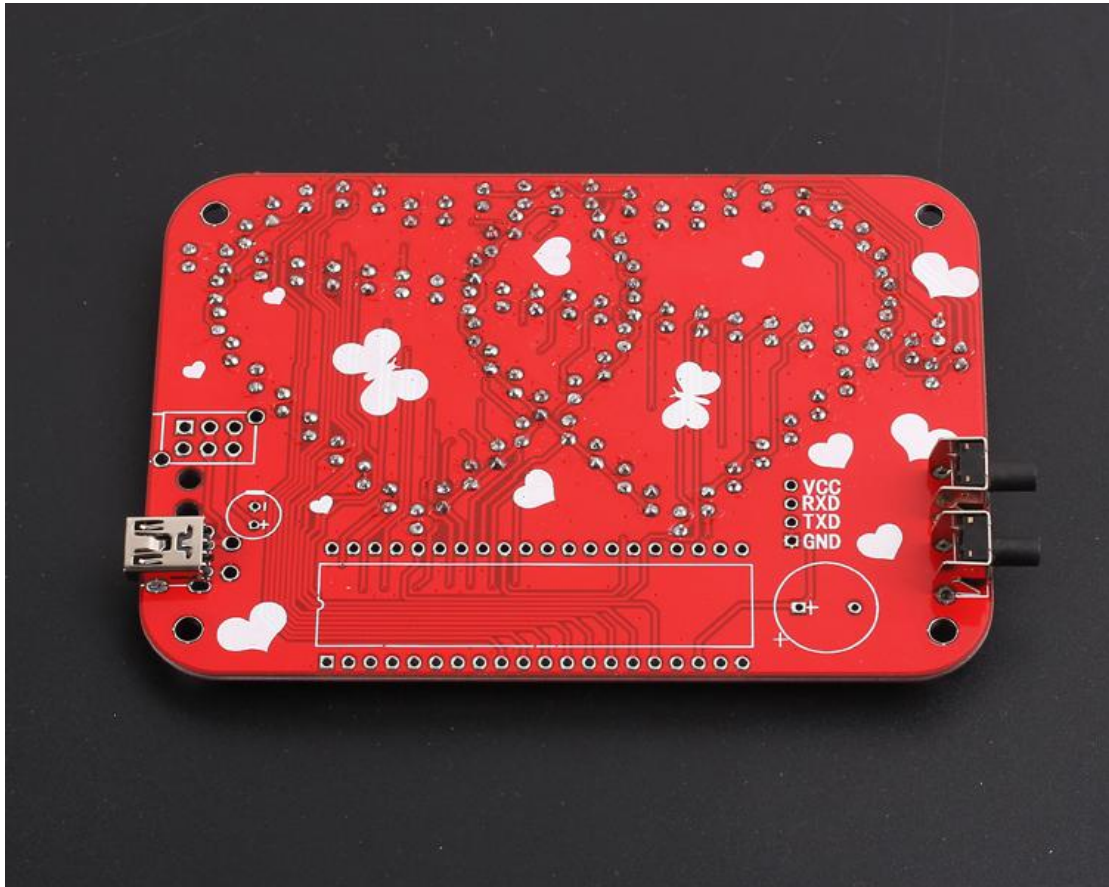
- 1>. Install small components at first;
- 2>. Install complex components preferentially;
- 3>. Pay attention to the installation direction of components.
- 4>. Make sure the soldering iron does not touch the components for a long time. Otherwise it is easy to damage the components.

Step 1: Install 85pcs LED. Pay attention to the installation direction.

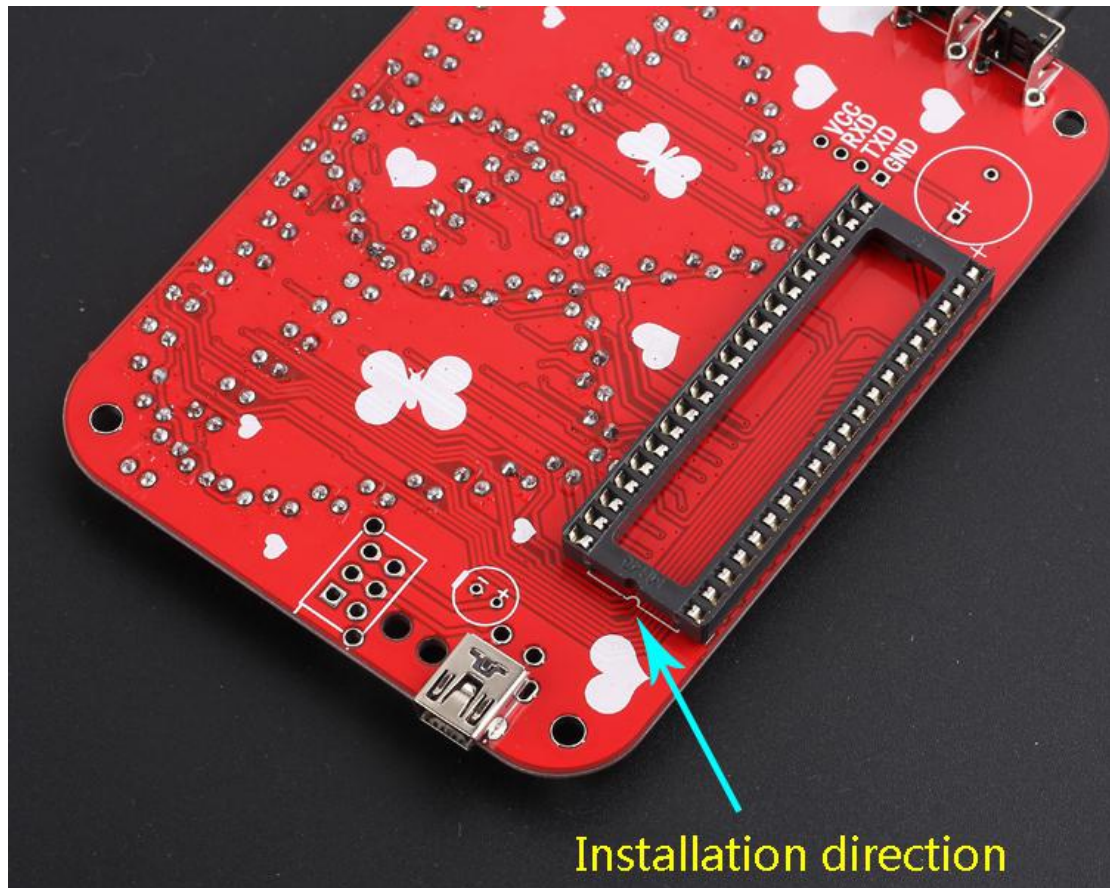
NOTE: It is just install LED on this side of PCB. Other components are installed on other side of PCB.



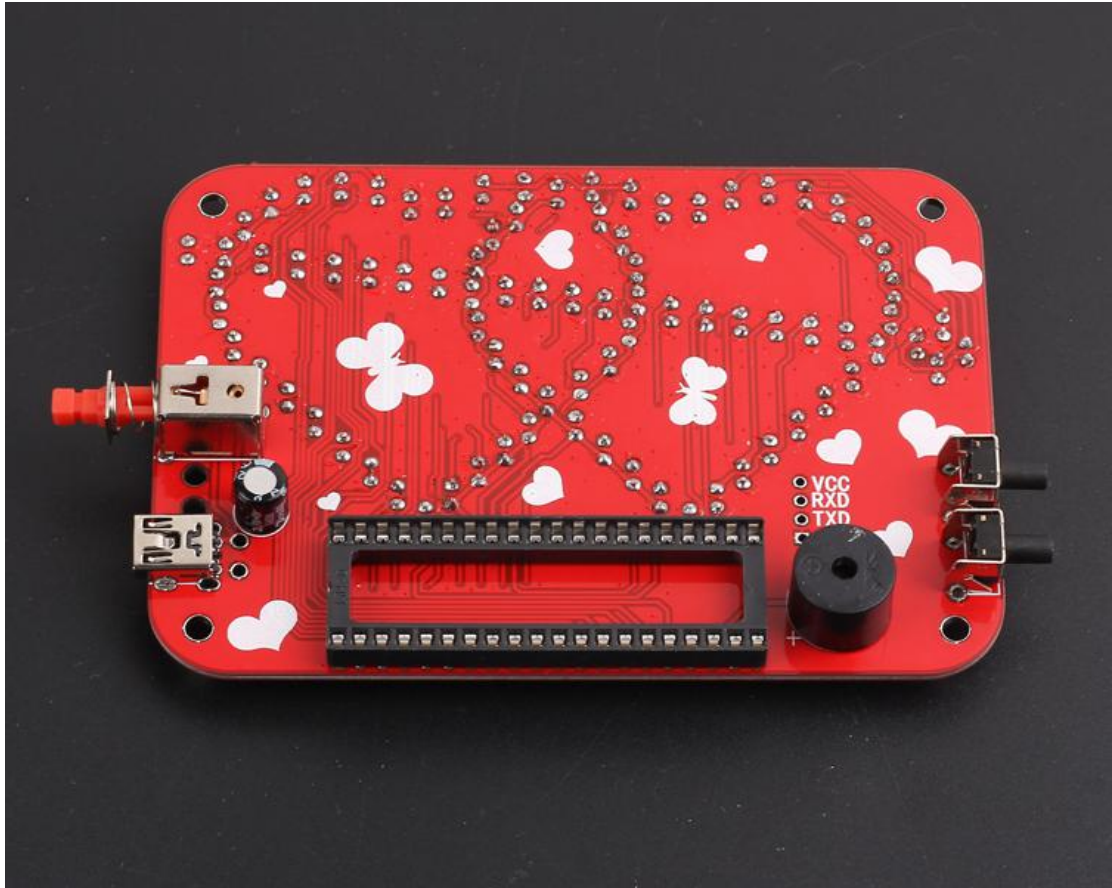
Step 2: Install Mini USB and 2pcs button on other side of PCB.



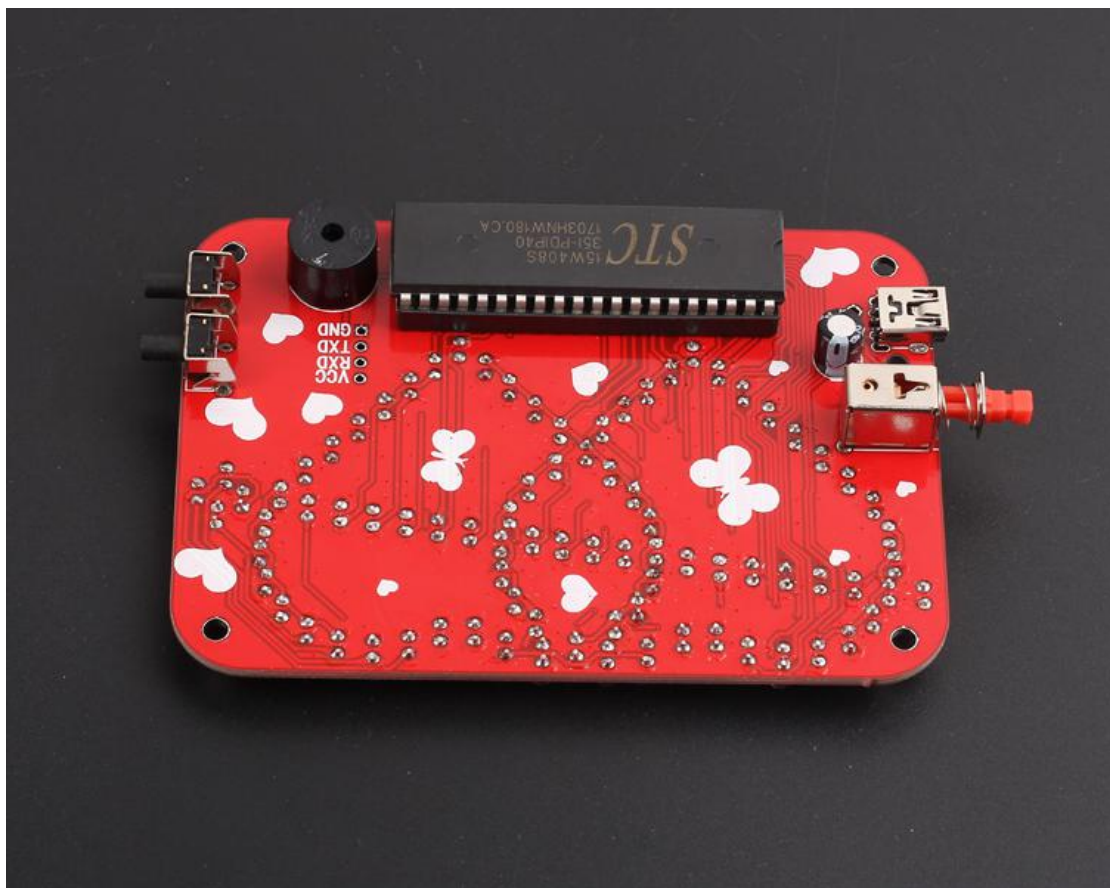
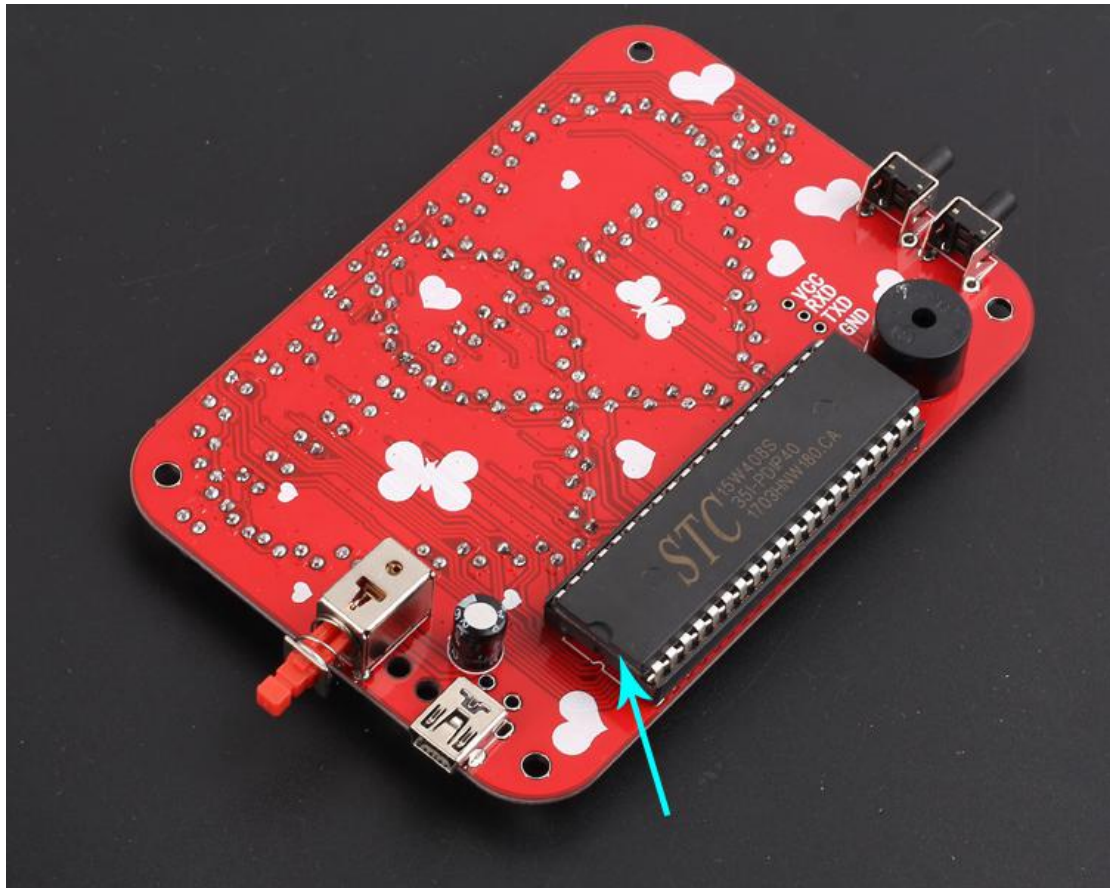
Step 3: Install 1pcs IC socket. Pay attention to the installation direction.



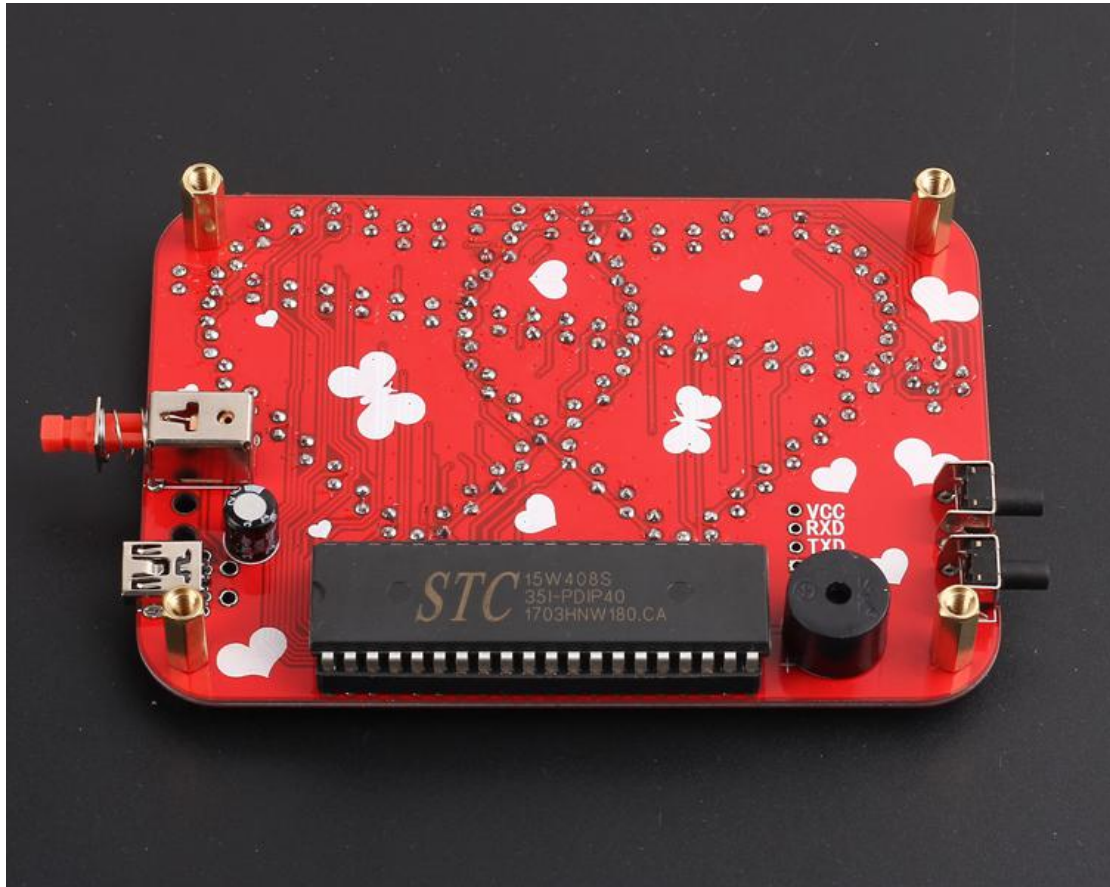
Step 4: Install electrolytic capacitor, power switch, buzzer.

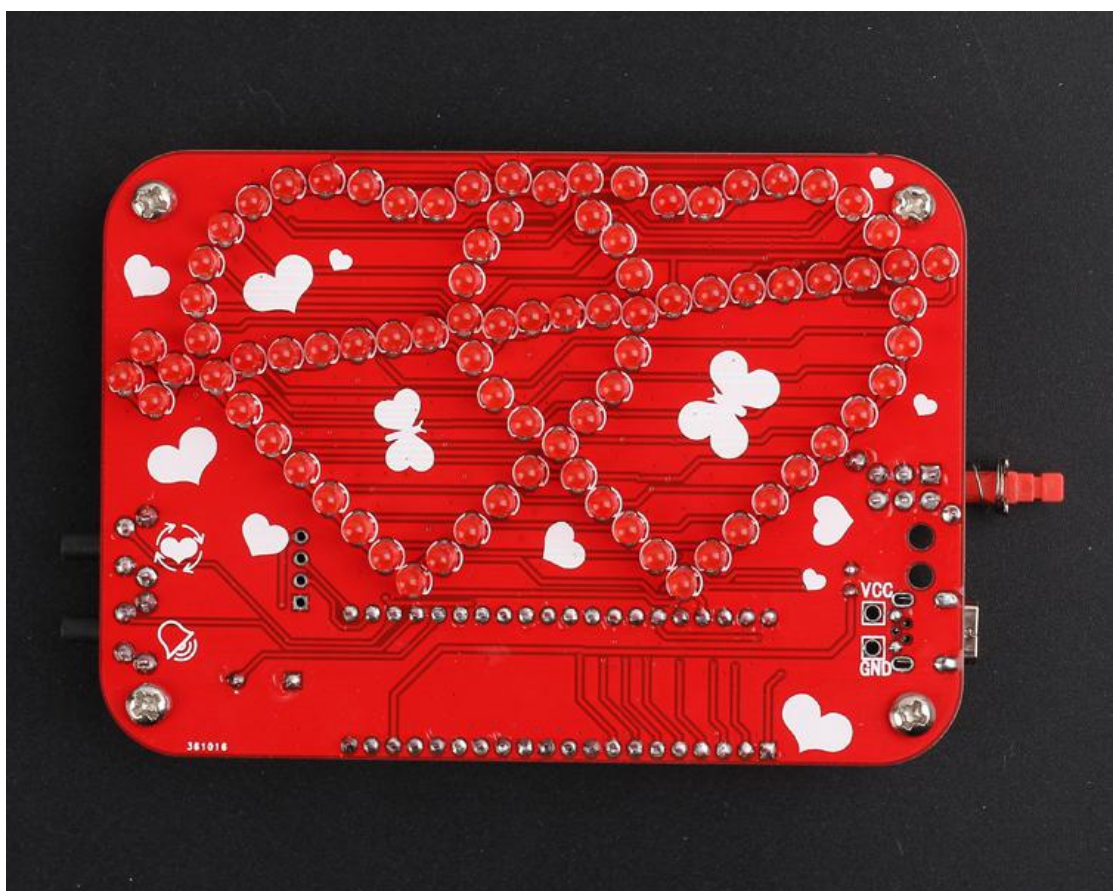
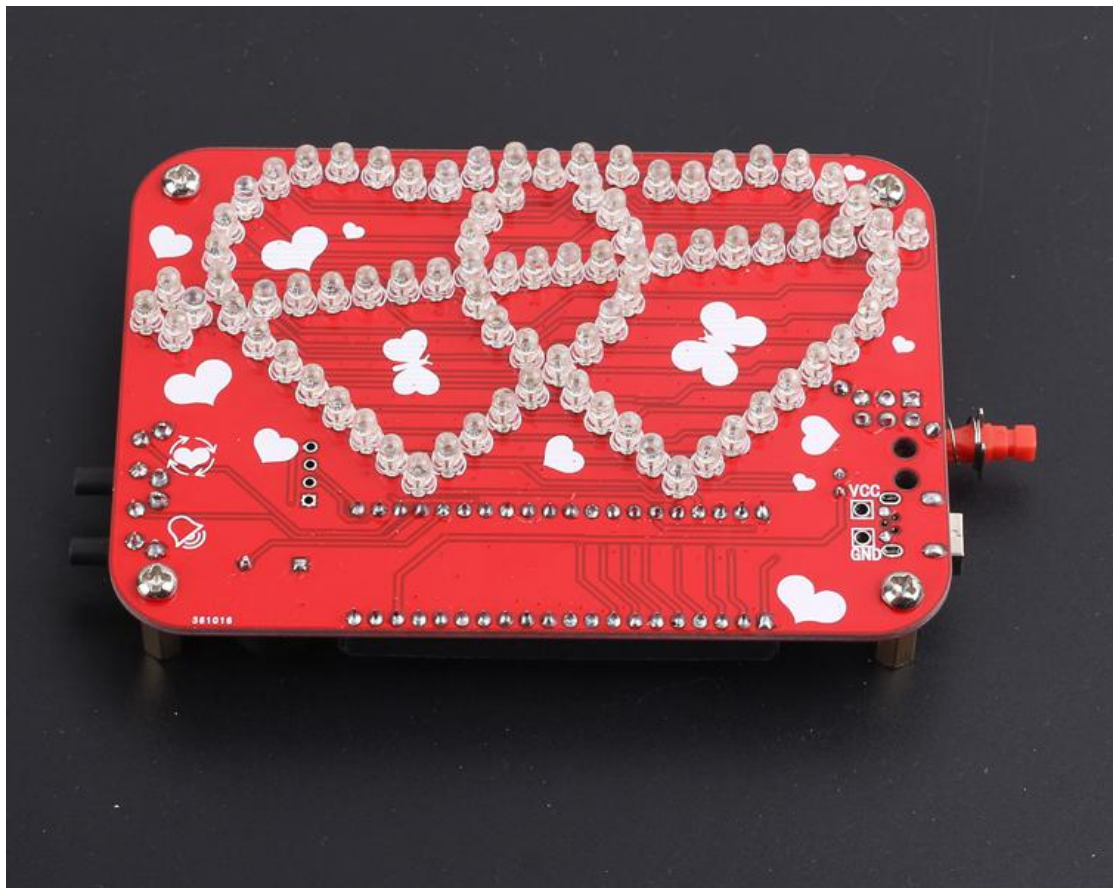


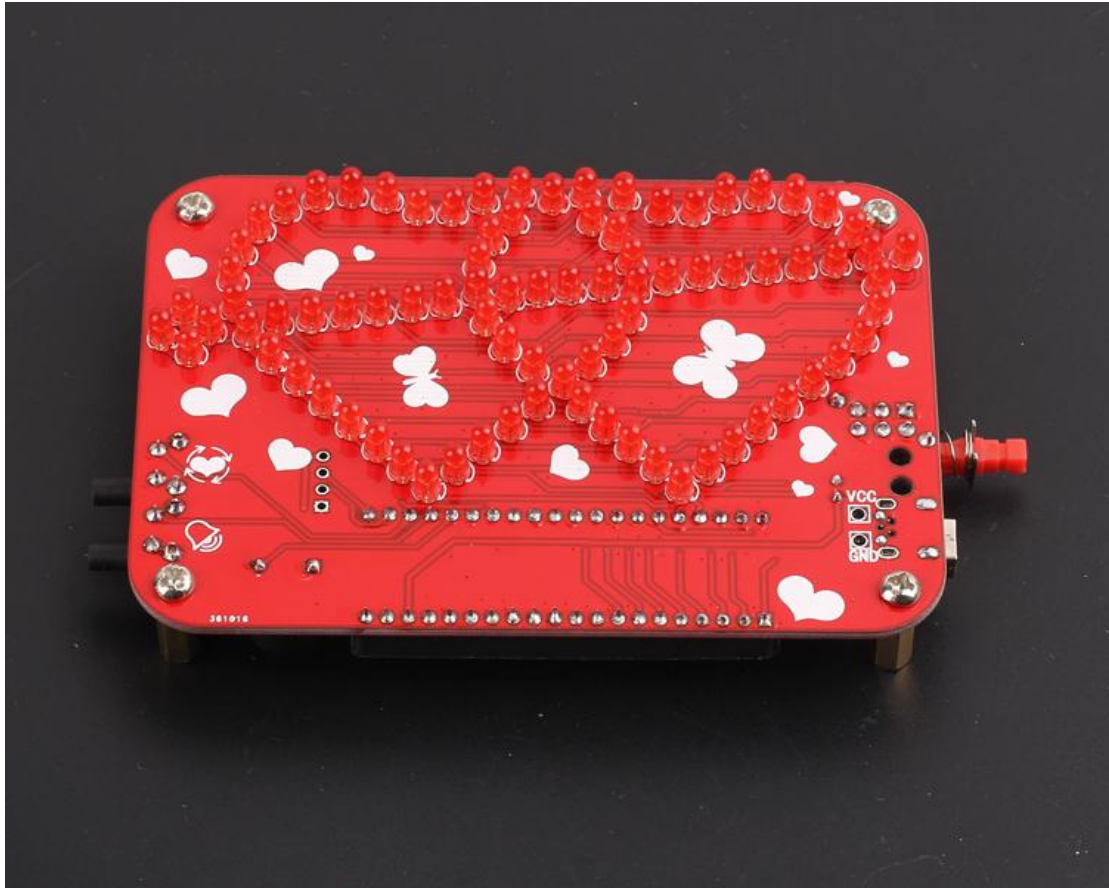
Step 5: Install IC.



Step 6: Install Copper Pillar and test!







Step 7: Install Acrylic shell if the package is included inside.

9. Effect demonstration(Only for appreciation)

